

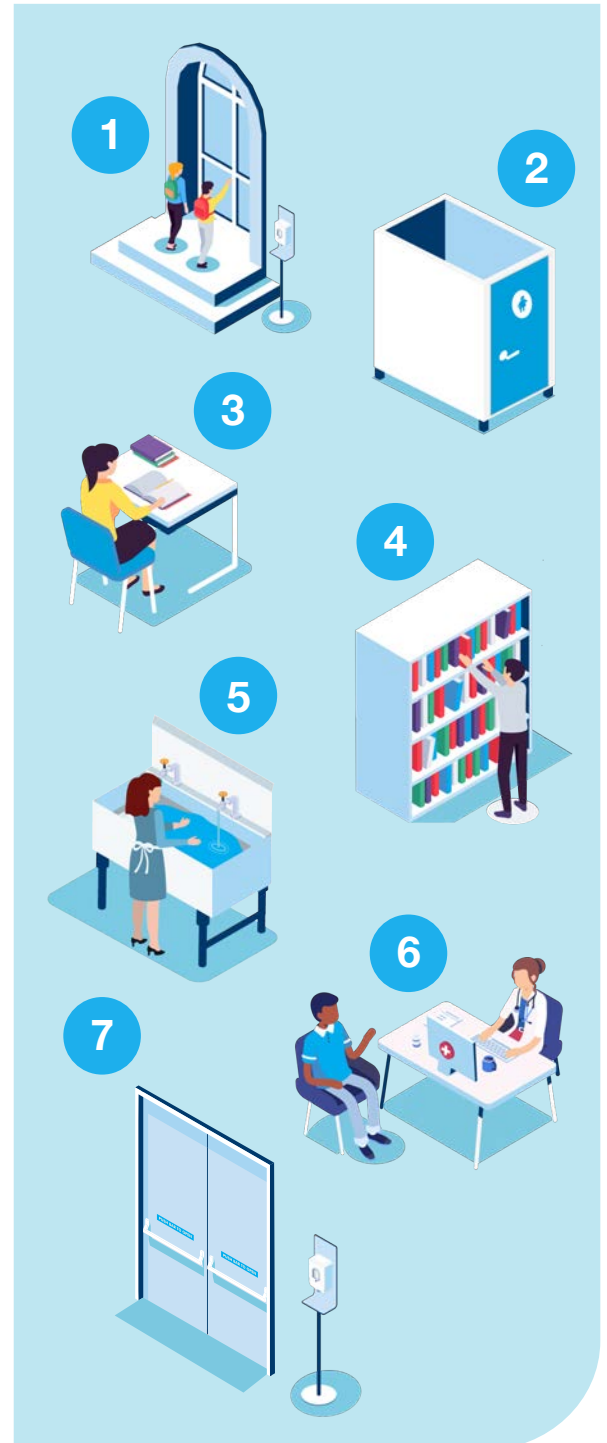


Think ahead.

Dispenser placement recommendations

Whether your school is in session during the COVID-19 pandemic or you are preparing to reopen, it is essential to reinforce proper hand hygiene among students and school staff members by making hand hygiene dispensers easily accessible and within sight. Here are some guiding principles for areas in your school.

- 1 Entrances**
Provide students, parents, faculty and staff with hand sanitizer at all entrances to encourage hand hygiene. Post visible notices that promote proper hand hygiene.
- 2 Restrooms and locker rooms**
Ensure you have numerous dispensers for soap, paper hand towels, facial tissues and hand sanitizer close to the sink and at an adapted height. Touch-free dispensers can reduce touchpoint surfaces, and hand sanitizer further encourages personal hygiene. Drying hands with paper hand towels lowers the risk of spreading bacteria; whereas, air dryers can spread higher levels of germs into the air.¹ Providing facial tissues can help prevent the spread of pathogens. Covered waste bins near all dispensers and doors can reduce contamination.
- 3 Classrooms**
Place hand sanitizer by the door and encourage students to use them when entering. Facial tissues should also be available near the entrance and at gathering areas to promote hygiene. Wipes and cleaning solutions should be available to clean desktops regularly.
- 4 Library, computer labs and offices**
Place hand sanitizer and facial tissue dispensers in these high-traffic areas. Covered waste bins in these areas can help reduce contamination. Easy access to wipes and cleaning solutions can enable cleaning of tables, chairs, shelves, computers and counters regularly. Encourage each user to take responsibility to clean their workspace after use.
- 5 Cafeterias and kitchens**
Provide hand sanitizer at entrances. In the kitchen, ensure there are soap and paper hand towel dispensers at handwashing sinks. Keep a dispenser by the counter for disposable hand towels and cleaning supplies for regular cleaning, and hand sanitizer dispensers to promote hygiene between transactions. Provide one-at-a-time napkin dispensers, so students touch only the napkins they take.
- 6 Teachers' lounges and nurse's office**
Place soap and sanitizer dispensers above all sinks. Offer touch-free paper hand towel dispensers and waste bins close by the sink. Provide wiping solutions to encourage regular surface cleaning. On tables, place one-at-a-time napkin dispensers and facial tissue boxes to improve hygiene.
- 7 Gymnasiums and athletic facilities**
Providing hand sanitizer stands at the entrances of high-traffic areas such as gymnasiums and athletic facilities can help students and staff members prevent germ spread.



1. Redway K, Fawdar S. A comparative study of three different hand drying methods: paper towel, warm air dryer, jet air dryer. European Tissue Symposium (ETS). 2008.