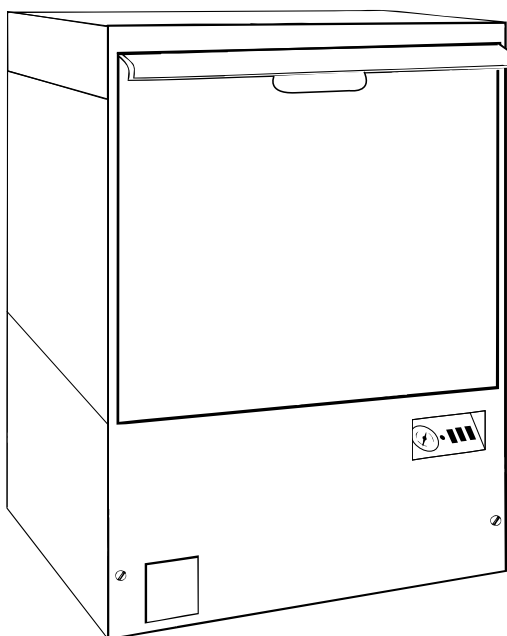




Simply Engineered Better

Technical Manual

Undercounter Dishwasher



Model

501-HT

501-HTN

501-LT

Machine Serial No.

July, 2003

Manual P/N 0508576 REV. J

P.O. Box 4183
Winston-Salem, North Carolina 27115-4183

2674 N. Service Road
Jordan Station, Ontario, Canada L0R 1S0

Moyer Diebel, U.S.
336/661-1992
Fax: 336/661-1979

Moyer Diebel, Ltd.
905/562-4195
Fax: 905/562-4618

Complete the information below so it will be available for quick reference.

Model Number _____ Serial Number _____

Voltage and Phase _____

Moyer Diebel Parts Distributor _____ Phone _____
(if applicable)

Moyer Diebel Service Agency _____ Phone _____

Moyer Diebel Service:

Moyer Diebel Limited

Phone: 1-905-562-4195

1-800-263-5798

Fax: 1-905-562-4618

Moyer Diebel, US

Phone: 1-336-661-1992

1-800-228-8350

Fax: 1-336-661-1660

NOTE: When calling to order parts, be sure to have the model number, serial number, voltage, and phase of your machine, along with your customer account number.

Revision History

| Revision Date | Revised Pages | Serial Number Effectivity | Comments |
|---------------|--------------------|---------------------------|--|
| 12/16/92 | All | — | Reissue of manual and new replacement parts lists. |
| 8/29/93 | 18-19 | 3100 | Redesign of door catch plunger and housing. |
| 8/29/93 | 20-21 | — | Redesign of thermometer fitting. |
| 8/29/93 | 24-25 | 3210 | Redesign of upper wash arm hub and gasket. |
| 8/29/93 | 27 | — | Added part numbers for valve kit. |
| 8/29/93 | 30-31 | — | Changed booster element part numbers. |
| 8/29/93 | 40-42 | — | Revised wiring schematics. |
| 6/30/95 | 28-29 | 5733 | Redesign of inlet chute. |
| 6/30/95 | 30-31 | 5713 | Redesign of booster assembly. |
| 6/30/95 | 43-46 | — | Added timer charts and diagrams. |
| 9/28/95 | 20-21 | 6264 | Redesign drain, eliminated tank overflow. |
| 4/18/96 | — | 6795 | Models 501UT, UTLC, UTL discontinued. |
| 6/6/96 | 18, 38 | 6984 | Redesign door safety switch, added magnetic reed switch and relay. |
| 6/6/96 | 42-45 | 6984 | Revised wiring schematics. |
| 8/1/96 | — | 7220 | Redesigned all models to have same height. |
| 9/1/96 | 26-27 | 7306 | Flexible fill hose added. |
| 1/9/97 | 42 | 6984 | Revised wiring schematic. |
| 5/16/98 | 21 | 9624 | Redesigned drain hose (P/N 0507265 changed to 0509302). |
| 9/9/98 | 42-44 | 6984 | Revised wiring schematics. |
| 2/28/00 | 13 | — | Revised troubleshooting instructions item #1, All switches on except extended wash switch. |
| 11/16/00 | 39 | — | Replaced P/N 112204 thermostats with P/N 109069 in booster for all serial numbers. |
| 8/22/01 | 21 | — | Revised part numbers on hose clamps and hose. |
| 2/5/03 | 39 | — | Replaced 108391 with 113622 thermometer. |
| 4/23/03 | 3,8,14,38,40,42,50 | W7604 | Added Final Rinse Sentry information. |
| 4/23/03 | 29,31 | — | Changed hose P/N 0509214 to P/N 107417. |
| 7/23/03 | 27, 29 | — | Changed hose P/N 0502665, 0509214, 107214 to 107417 |

**THIS PAGE
INTENTIONALLY
LEFT BLANK**

CONTENTS

| | Page |
|--------------------------------|-------------|
| INTRODUCTION | 1 |
| WARRANTY | 2 |
| GENERAL | 3 |
| INSTALLATION | 5 |
| Unpacking | 5 |
| Electrical Connections..... | 5 |
| Plumbing Connections | 6 |
| Detergent | 6 |
| Rinse-Aid | 6 |
| Chemical Sanitizer | 6 |
| Completing Installation | 7 |
| OPERATION | 8 |
| Operation Summary | 8 |
| Operation Procedures | 8 |
| Extended Wash Cycle | 9 |
| MAINTENANCE..... | 10 |
| Cleaning Schedule..... | 10 |
| Deliming..... | 11 |
| Deliming Process..... | 11 |
| Maintenance Schedule..... | 12 |
| TROUBLESHOOTING | 13 |
| REPLACEMENT PARTS..... | 15 |
| ELECTRICAL DIAGRAMS | 42 |
| TIMER CHARTS and DIAGRAMS..... | 50 |

LIST OF FIGURES

| | |
|--|----|
| Figure 1—Track and Panel Assembly..... | 16 |
| Figure 2—Door and Switch Assembly..... | 18 |
| Figure 3—Tank Heat and Drain | 20 |
| Figure 4—Pump Assembly | 22 |
| Figure 5—Wash System Assembly..... | 24 |
| Figure 6—Water Inlet Piping | 26 |
| Figure 7—Fill System | 28 |
| Figure 8—Booster Assembly | 30 |

| | |
|--|----|
| Figure 9—Detergent Pump Assembly..... | 32 |
| Figure 10—Sanitizer/Rinse-Aid Pump Assembly..... | 34 |
| Figure 11—Drain Pump Assembly | 36 |
| Figure 12—Control Cabinet | 38 |
| Figure 13—Electrical Diagram, 501-HT (For machines beginning with S/N W7604) | 42 |
| Figure 14—Electrical Diagram, 501-HT (For machines ranging from S/N 6984 to W7604) | 43 |
| Figure 15—Electrical Diagram, 501-HTN (For machines beginning with S/N 6984) | 44 |
| Figure 16—Electrical Diagram, 501-LT (For machines beginning with S/N 6984) | 45 |
| Figure 17—Electrical Diagram, 501-HT (50Hz) | 46 |
| Figure 18—Electrical Diagram, 501-HT/UT/UTLC (For machines built prior to S/N 6984)..... | 47 |
| Figure 19—Electrical Diagram, 501-HTN (For machines built prior to S/N 6984) | 48 |
| Figure 20—Electrical Diagram, 501-LT/UTL (For machines built prior to S/N 6984) | 49 |
| Figure 21—Timer Chart and Diagram, 501-HT (For machines beginning with S/N W7604) | 50 |
| Figure 22—Timer Chart and Diagram, 501-HT (For machines prior to S/N W7603) | 51 |
| Figure 23—Timer Chart and Diagram, 501-UT..... | 52 |
| Figure 24—Timer Chart and Diagram, 501-LT | 53 |

INTRODUCTION

Welcome to **Moyer Diebel**.

Thank you for choosing **Moyer Diebel** and for allowing us to take care of your dishwashing needs.

This manual covers several models. Model numbers are shown on the front cover.

Your machine has been completely assembled, inspected, and thoroughly tested at our factory to eliminate problems at installation before it was shipped to your installation site. This manual provides:

- Warranty information
- Installation and operation procedures
- Maintenance instructions
- Troubleshooting guide
- Replacement parts lists.

Complete and return your warranty registration card as soon as possible.

Moyer Diebel constantly improves its products; therefore, specifications contained in this manual may have changed.

For your protection, factory authorized parts should always be used.

Replacement parts may be ordered directly from **Moyer Diebel** or from your **Moyer Diebel** authorized parts distributor or service agency.* When ordering parts, supply the model number, serial number, voltage and phase of your machine, the part number, part description, and quantity.

***Moyer Diebel** can only ship parts to customers with accounts or by C.O.D.

LIMITED WARRANTY

Moyer Diebel, P.O. Box 4183, Winston-Salem, North Carolina 27115, and P. O. Box 301, 2674 North Service Road, Jordan Station, Ontario, Canada L0R 1S0 warrants machines, and parts, as set out below.

Warranty of Machines: Moyer Diebel warrants all new machines of its manufacture bearing the name “Moyer Diebel” and installed within the United States and Canada to be free from defects in material and workmanship for a period of one (1) year after the date of installation or fifteen (15) months after the date of shipment by Moyer Diebel, whichever occurs first. [See below for special provisions relating to Model Series DF and SW.] The warranty registration card must be returned to Moyer Diebel within ten (10) days after installation. If warranty card is not returned to Moyer Diebel within such period, the warranty will expire after one year from the date of shipment.

Moyer Diebel will not assume any responsibility for extra costs for installation in any area where there are jurisdictional problems with local trades or unions.

If a defect in workmanship or material is found to exist within the warranty period, Moyer Diebel, at its election, will either repair or replace the defective machine or accept return of the machine for full credit; provided, however, as to Model Series DF and SW, Moyer Diebel’s obligation with respect to labor associated with any repairs shall end (a) 120 days after shipment, or (b) 90 days after installation, whichever occurs first. In the event that Moyer Diebel elects to repair, the labor and work to be performed in connection with the warranty shall be done during regular working hours by a Moyer Diebel authorized service technician. Defective parts become the property of Moyer Diebel. Use of replacement parts not authorized by Moyer Diebel will relieve Moyer Diebel of all further liability in connection with its warranty. In no event will Moyer Diebel’s warranty obligation exceed Moyer Diebel’s charge for the machine. The following are not covered by Moyer Diebel’s warranty:

- a. Lighting of gas pilots or burners.
- b. Cleaning of gas lines.
- c. Replacement of fuses or resetting of overload breakers.
- d. Adjustment of thermostats.
- e. Adjustment of clutches.
- f. Opening or closing of utility supply valves or switching of electrical supply current.
- g. Adjustments to chemical dispensing equipment.
- h. Cleaning of valves, strainers, screens, nozzles, or spray pipes.
- i. Performance of regular maintenance and cleaning as outlined in operator’s guide.
- j. Damages resulting from water conditions, accidents, alterations, improper use, abuse, tampering, improper installation, or failure to follow maintenance and operation procedures.

Examples of the defects not covered by warranty include, but are not limited to: (1) Damage to the exterior or interior finish as a result of the above, (2) Use with utility service other than that designated on the rating plate, (3) Improper connection to utility service, (4) Inadequate or excessive water pressure, (5) Corrosion from chemicals dispensed in excess of recommended concentrations, (6) Failure of electrical components due to connection of chemical dispensing equipment installed by others, (7) Leaks or damage resulting from such leaks caused by the installer, including those at machine table connections or by connection of chemical dispensing equipment installed by others, (8) Failure to comply with local building codes, (9) Damage caused by labor dispute.

Warranty of Parts: Moyer Diebel warrants all new machine parts produced or authorized by Moyer Diebel to be free from defects in material and workmanship for a period of 90 days from date of invoice. If any defect in material and workmanship is found to exist within the warranty period Moyer Diebel will replace the defective part without charge.

DISCLAIMER OF WARRANTIES AND LIMITATIONS OF LIABILITY. MOYER DIEBEL’S WARRANTY IS ONLY TO THE EXTENT REFLECTED ABOVE. CHAMPION MAKES NO OTHER WARRANTIES, EXPRESS OR IMPLIED, INCLUDING, BUT NOT LIMITED, TO ANY WARRANTY OF MERCHANTABILITY, OR FITNESS OF PURPOSE. MOYER DIEBEL SHALL NOT BE LIABLE FOR INCIDENTAL OR CONSEQUENTIAL DAMAGES. THE REMEDIES SET OUT ABOVE ARE THE EXCLUSIVE REMEDIES FOR ANY DEFECTS FOUND TO EXIST IN MOYER DIEBEL DISHWASHING MACHINES AND MOYER DIEBEL PARTS, AND ALL OTHER REMEDIES ARE EXCLUDED, INCLUDING ANY LIABILITY FOR INCIDENTALS OR CONSEQUENTIAL DAMAGES.

Moyer Diebel does not authorize any other person, including persons who deal in Moyer Diebel dishwashing machines to change this warranty or create any other obligation in connection with Moyer Diebel Dishwashing Machines.

GENERAL

This manual covers the **Moyer Diebel** undercounter dishwashing machine. This machine is fully automatic and is equipped with a 1/2 H.P. pump motor. All models are available for mounting directly to the floor or on optional stands (see accessories listed on page 4).

Standard equipment includes:

- | | |
|---|---|
| -Automatic tank fill | -Upper and lower wash/rinse arms |
| -Common utility connections | -Two dish racks (peg and flat) |
| -120 Volt control circuit | -Exclusive vent design for venting of condensation |
| -Convenient, easy to use controls | -Stainless steel heavy-gauge construction, including base |
| -Door latch activated start switch | |
| -Detergent pump | |
| -Final Rinse Sentry (high temp models only) | |

This series of dishwashers is available in the following models:

Model Numbers

501HT, 501HTN, 501LT

- The 501HT model is a high temperature (82°C/180°F rinse) sanitizing model with booster.
- The 501HTN model is a high temperature (82°C/180°F rinse) sanitizing model without booster.
- The 501LT model is a low temperature (60°C/140°F rinse) sanitizing model for use with 5.25% or 8.4% sodium hypochlorite solution (chlorine bleach) as a sanitizing agent. The rinse aid pump is optional.

Options

- Kit 504 - Top and side panels (P/N 0708756)
- Kit 505 - Top panel only (P/N 0708744)
- Kit 506 - Left side panel only (P/N 0708745)
- Kit 507 - Right side panel only (P/N 0708746)
- Kit 508 - Rinse aid pump kit (P/N 0708754)
- Kit 510 - Extended reach pumped drain kit (HT, HTN, LT) (P/N 0708766)
- Kit 511 - 30°C/70°F temperature rise booster (for 49°C/110°F supply water).

Accessories

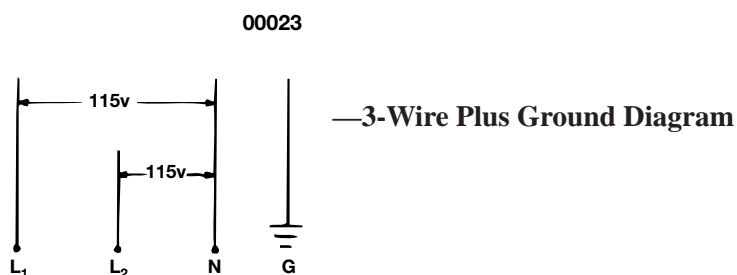
- 17RS - 17" rack stand (raises working height and adds rack storage)
- 17T - 17" cabinet (raises working height and adds storage)
- CST - Combination sink/table (scrapping and sorting station)
- 0501653 - Dish Rack (Peg Rack)
- 0501654 - Silverware Rack (Flat Bottom Rack)
- 0710364 - 5" Base/Stand

Electrical Power Requirements

| Model | Voltage | Booster Rise | Machine Full Load Amp | Power Requirement (125% Service Factor) |
|--------|----------|--------------|-----------------------|---|
| 501LT | 115/60/1 | N/A | 12 | 15 |
| 501HTN | 115/60/1 | N/A | 12 | 15 |
| 501HT | 208/60/1 | 40 | 36 | 44 |
| 501HT | 240/60/1 | 40 | 40 | 49 |
| 501HT | 208/60/1 | 70 | 48 | 59 |
| 501HT | 240/60/1 | 70 | 55 | 68 |

NOTE:

208-240V/60Hz/1PH electrical supply service must be a 3-wire plus ground for connection as shown.



INSTALLATION

Unpacking

**WARNING:**

Care should be taken when lifting the machine to prevent damage.

1. Immediately after unpacking your machine, inspect for any shipping damage. If damage is found, save the packing material and contact the carrier immediately.
2. Remove the dishwasher from the skid. Adjust the feet if required, then move the machine to its permanent location.
3. Level the machine (if required) by placing a level on the top of the machine and adjusting the feet. Level the machine front-to-back and side-to-side.

**CAUTION:**

After locating your machine, it must meet local health codes. An example may be to seal your machine to the floor using a good grade of silicone sealant.

Electrical Connections

**WARNING:**

Electrical and grounding connections must comply with the National Electrical Code and/or Local Electrical Codes.

**WARNING:**

When working on the dishwasher, disconnect the electric service and tag it to indicate work is being done on that circuit.

1. The electrician should compare the electrical specifications on the machine electrical junction box (located behind the front panel) to the electrical power supply before connecting the machine to the incoming service at a fused disconnect switch.

**NOTE:**

The 208-240V/60Hz/1PH electrical supply service for this machine must be a 3-wire plus ground service.

2. On the 208V-240V models, a knock-out is provided at the rear of the junction box (located behind the front panel) for electrical service connections. A fused disconnect switch or circuit breaker (supplied by user) is required to protect each power supply circuit.
3. On 115V models, your machine is already equipped with a 4-foot power cord and plug suitable for 115V-15A service.

Plumbing Connections



CAUTION:

Plumbing connections must comply with local sanitary and plumbing codes.

Water Connections

1. Connect the hot water supply (60°C/ 140°F Min) to the 1/2" I.D. fill hose. The fill solenoid valve is equipped with a flow control that will accept water pressures from 172 kPa/25 psi to 665 kPa/95 psi.
2. Install a manual shut-off valve in the water supply line to accommodate servicing the machine. The shut-off valve should be the same size or larger than the supply line.
3. The fill solenoid valve is equipped with a built-in strainer to protect from particles in the water supply.

Drain Connections

1. All Models are supplied with a flexible 5/8" I.D. drain hose, which must be connected to a 1-1/2" drain using a wye (Y) fitting.

Detergent

1. Use a qualified detergent/chemical supplier for your detergent, rinse aid, and chemical sanitizer needs.
2. Your machine is supplied with a detergent dispensing pump that is internally wired and ready for use. Using a liquid detergent, insert the labeled *Detergent* pickup tube into the detergent container. The pickup tube has a strainer on the end to prevent crystallized chemical from clogging the supply lines.
3. The cycle timer located in the main control cabinet is equipped with adjustable cams for the chemical dispensing pump(s). The cams control the length of time that the pumps operate. A qualified person may adjust the cam settings if necessary. Refer to the timer chart diagram(s) at the end of the manual for timer cam locations and factory time settings.



NOTE:

A nonchlorinated detergent is recommended for your dishwasher.

Rinse Aid

1. An optional rinse aid pump may be supplied for all models. Using a liquid rinse aid, insert the labeled *Rinse Aid* pickup tube into the rinse aid container.

Chemical Sanitizer

1. Model 501LT is supplied with an internally wired chemical sanitizer dispensing pump. Using a 5.25% or 8.4% sodium hypochlorite solution, insert the labeled *Chemical Sanitizer* pickup tube into the chemical sanitizer container.
2. Contact your chemical supplier for adjustment of the chemical sanitizer.

Completing Installation

1. Remove any foreign material from inside the machine.
2. Center the scrap screen over the sump opening.
3. Prime the booster using the following procedure (if applicable).

**CAUTION:**

To prime the booster, the following procedure must be followed AFTER the electrical and plumbing connections have been made.

- a. Close the front door.
- b. Remove the front panel.
- c. Locate the Installation and Service toggle switch on the extreme left side of the control box.
- d. Press the toggle switch down to the Booster Fill position and hold it approximately 1 minute (or until water can be heard entering the machine).
- e. Release the toggle switch to stop the water flow.
- f. You have completed the booster priming process.

**NOTE:**

Push the Installation and Service toggle switch to the UP position. Electrical power is now supplied to the machine.

**WARNING:**

Failure to prime the booster may cause damage to the booster elements and other electrical components and will void the warranty.

4. After plumbing and electrical connections are completed, check the machine for water leaks by depressing the **ON/FILL** switch on the front panel, then close and latch the door. This allows the tank to fill and to complete the rinse cycle. Check for leaks.
5. Open the door and check the water level. The water level should barely cover the scrap screen.
6. Depress the **OFF/DRAIN** switch and close and latch the door to drain the tank. This allows the machine to complete the 100-second wash and drain cycle. Check the drain plumbing for leaks.
7. Replace the front panel. Installation is now complete.

OPERATION

Operation Summary

The following is a summary of your Undercounter Dishwashing Machine operating cycle:

1. The cycle begins when you depress the front edge of the door latch toward the door.
2. The green cycle lamp lights and the pump starts.
3. The pump runs during the wash cycle for approximately 80 seconds. The wash cycle duration is extended if booster is not up to temperature.
4. The pump stops, and the drain is opened.
5. After a 2-3 second pause, the pump drain cycle begins and continues for approximately 30 seconds.
6. After a 2-3 second pause, the fill valve opens, and the pump starts for the rinse cycle.
7. Within approximately 25 seconds, the rinse cycle is complete. The pump stops, the green cycle lamp turns off, and the cycle is complete.
8. Open the door and remove the rack of clean ware. The door must remain open for 5 seconds to allow the timer to reset before starting another cycle.

Operation Procedures

The operation of your dishwasher will be more efficient when these procedures are followed:

1. Check that the spray arms and scrap screen are in place.
2. Close the door and depress the front edge of the door latch toward the door. Push the **ON/FILL** switch to the **ON** position. The tank will begin filling with water. This procedure is followed only when the tank is empty.
3. When the tank is full, check the wash tank temperature gauge. Minimum wash temperatures are:
 - 501HT, 501HTN - **66°C/150°F.**
 - 501LT - **60°C/140°F.**
4. Scrap and preflush all items to be washed, and load the items into the rack. **DO NOT OVERLOAD** the rack. Wash only one layer of silverware in a rack.
5. Open the door and insert the rack into the machine.
6. Shut the door, and depress the door latch. This will start the wash cycle. The green cycle lamp located on the front control panel will light. This lamp will remain on until the entire wash and rinse cycle is completed.

⇒ NOTE:

The machine may be stopped at any time by opening the door. When restarted, the cycle does not start over. It will continue from the point at which it was interrupted.

7. Check the rinse temperature during the final rinse (120 seconds into cycle). The rinse temperature must be 82°C/180°F minimum for models 501HT, 501HTN, 501UT and 501UTLC and 60°C/140°F for models 501LT and 501UTL.
8. The pump will automatically stop and the green cycle light will turn off indicating the cycle is completed.
9. Open the door and remove the rack.
10. Repeat steps 4-9 for additional cycles. Machine operation is automatic.
11. CLEAN the scrap screen after every meal period. During heavy usage, the scrap screen should be cleaned more frequently.

**CAUTION:**

Poor machine performance and/or damage to the machine can occur if the scrap screen becomes clogged with soil or waste particles.

12. After completing usage for the day, water in the tank should be drained by depressing the OFF/DRAIN switch and closing and latching the door. This initiates a 100 second wash and drain cycle that drains the tank.

**CAUTION:**

DO NOT LEAVE WATER IN THE TANK OVERNIGHT. Water left in the tank overnight will allow harmful chemicals to deteriorate the tank.

Extended Wash Cycle

On models 501HT, 501HTN, 501UT and 501UTLC, but not on models 501LT and 501UTL, an extended wash cycle is available for pots, pans and heavily soiled items.

To use the Extended Wash Cycle:

1. Insert the loaded rack into the machine. Close the door and depress the latch. Wait 10 seconds for the detergent to be dispensed automatically.
2. Flip the **Extended Wash/Delime Switch** to the **UP** position. The green cycle light will go out, indicating that the machine is in a **CONTINUOUS** wash mode.
3. When your desired wash time has passed, flip the **Extended Wash/Delime Switch** to the **DOWN** position. The green cycle light will come on, indicating a return to the normal wash mode. The machine will now complete the remaining portion of the automatic cycle.

MAINTENANCE

The efficiency and life of your machine is increased by regularly scheduled preventive maintenance. A well maintained machine gives better results and service. An investment of a few minutes of daily maintenance will be worthwhile.

The best maintenance you can provide is to keep your machine clean. Components that are not regularly cleaned and flushed will clog and become inoperative.

Intervals shown in the following schedules represent an average length of time between necessary maintenance. Maintenance intervals should be shortened whenever your machine is faced with abnormal working conditions, hard water, or multiple shift operations.

Cleaning Schedule

- **Daily-Every 8 Hours**

1. Depress the **OFF/DRAIN** switch to **OFF** and close and latch the door to drain the tank.
2. Open the door and remove both the upper and lower spray arms by unscrewing the knurled fastener holding each spray arm.
3. Remove the scrap screen carefully to keep soil or waste particles from falling into the sump.
4. Clean inside the tank with clean water. Backflush the scrap screen until it is clean. Do not strike the screen against solid objects.
5. Clean the wash arms to remove any debris from spray openings. Do not strike the spray arms against solid objects.
6. Reinstall the scrap screen and spray arms.
7. Leave the door open overnight to allow drying.
8. Report any unusual conditions to your supervisor.

- **Meal Periods**

1. Clean the scrap screen after every meal period and more frequently during heavy usage. Do not allow the scrap screen to become clogged with soil or waste particles.

Deliming

Your dishwasher should be delimed regularly as required. This will depend on the mineral content of your water.

Inspect your machine interior for lime deposits. If deliming is required, a deliming agent should be used for best results.

If you have the chemical sanitizing model (501LT or 501UTL), carefully follow the following procedure before deliming:



DANGER:

Deliming solution or other acids must not come in contact with household bleach (sodium hypochlorite) or any chemicals containing chlorine, iodine, bromine, or fluorine. Mixing will cause hazardous gases to form. Skin contact with deliming solutions can cause severe irritation and possible chemical burns. Consult your chemical supplier for specific safety precautions.

1. Remove the sanitizer tube from the container. Place the tube into a container of hot water.
2. Depress and hold the **SANITIZER** prime switch (located on the front panel) until clear water enters the tank through the fill air gap.
3. Close the door and depress the door latch. Complete two operating cycles to purge the machine of all sanitizer.

Deliming Process

Complete the following procedure to delime your machine:

1. Add the delime chemical to wash the tank (per chemical supplier specifications).
2. Close and latch the door.
3. On models 501HT, 501HTN, 501UT and 501UTLC depress the **EXTENDED WASH/DELIME** switch on the front panel as soon as the cycle starts. On models 501LT and 501UTL, proceed to step 5 of this procedure.



NOTE:

*The **EXTENDED wash/delime** switch will operate only during the wash cycle. When this switch is in the **ON** position, the machine stays in the wash cycle until the switch is **OFF**. After switching to **OFF**, the machine will finish the cycle.*

4. After 2-1/2 to 3 minutes (or as long as required), turn off the **EXTENDED WASH/DELIME** switch. The machine will finish a complete cycle.
5. Complete two cycles with the machine empty to purge the machine of all delime chemicals.
6. Deliming is complete.

Maintenance Schedule

- **As Required**

1. Check the temperature gauge reading.
2. Check the chemical supplies and refill as necessary.

- **Weekly**

1. Inspect all water lines for leaks and tighten them at joints if required.
2. Clean all detergent residue from the exterior of the machine.
3. Check the drain for leaks.
4. Clean accumulated scale from the heating element.
5. Remove and closely inspect each spray arm for blockage.
6. Check for damage to the scrap screen. Ineffective screening can cause wash system failures.
7. Clean the detergent, sanitizer, and rinse aid supply tubes. Complete the following procedure:
 - a. Remove the detergent, sanitizer, and rinse aid pick-up tube(s) from the container(s). Place the tube(s) into a container of hot water.
 - b. Depress and hold the **DET** prime switch (located on the front panel) until clear water enters the tank through the fill air gap (located on the right side of the tank).
 - c. If your machine is equipped with a sanitizer and/or rinse aid pump, follow the same procedure by pressing the **SANITIZER** and/or the **RINSE AID** prime switch until clear water enters the tank through the fill air gap.
 - d. When completed, remove the pickup tubes from the hot water and reinsert them into the correct chemical containers. Repeat the priming procedures to ensure that chemicals have filled the tubes for the next operating period.
 - e. Run a complete cycle to flush chemicals from the tank.

TROUBLESHOOTING

Before determining any specific cause of a breakdown or abnormal operation of your dishwasher, check that:

1. Turn all switches ON, except for the extended wash switch.
2. Wash arms are clean.
3. Scrap screen is properly positioned and clean.
4. Thermostat(s) are at their correct setting.
5. Sanitizer, detergent, and rinse additive dispensers are adequately filled.
6. All plumbing valves are open.

If a problem still exists, use the following table for troubleshooting.

| CONDITION | CAUSE | SOLUTION |
|--------------------------------------|--|--|
| Machine will not start | Door not closed and latched | Make sure door is fully latched |
| | Main switch off, or unit unplugged | Check disconnect or plug into outlet Make sure the extended wash switch is in the OFF position. |
| Low or no water | Main water supply is turned off | Turn on house water supply |
| Chemical not feeding | No chemical in container..... | Replace or fill container |
| | Feed tubes to/from chemical | Clear obstruction and flush with hot water |
| | pump clogged | Clean and replace |
| | Screen on feed tube clogged..... | Straighten or replace tubing |
| Water temperature is low when in use | Tubing kinked or split | |
| | | |
| Incoming water temperature..... | at machine too low | Raise temperature to 60°C/140°F for all machines |
| | Hi limit tripped | Reset hi limit |
| Insufficient pumped spray pressure | Clogged spray arm | Clean |
| | Scrap screen full | Must be kept clean and in place |
| Low final rinse temperature | Low incoming water..... | Check the booster - be sure the thermostat is set to maintain 66°C/180°F temperature (501LT is 60°C/140°F) (Check all valves to be sure they are clean and operating) |
| | Hi limit tripped | Reset hi limit |
| Poor washing results | Water level low in wash tank | Check fill valve and water pressure |
| | should be at or 1/2" (13mm) above screen | |
| | Detergent dispenser not..... | Contact service agent |
| | operating properly | |
| | Insufficient detergents | Check and fill |
| | | Contact detergent supplier |
| | Detergent setting too low | Contact detergent supplier |
| | Wash water temperature too low..... | See above booster temperatures |
| | Wash arm clogged | Clean wash arm |
| | Improperly scraped dishes..... | Check scraping procedures |
| | Ware being improperly..... | Use proper racks - do not overload racks |
| | placed in rack | |
| Improperly cleaned | equipment | Unclog wash arms to maintain proper pressure and flow conditions |
| | Electric element has | Clean and delime |
| | soil/lime buildup | |

TROUBLESHOOTING (con't)

| CONDITION | CAUSE | SOLUTION |
|---|---|--|
| No water in wash well | Opening door prior to cycle completion | Close door. Wait for green cycle light to go out before opening door. |
| No water in wash tank after activating the ON/FILL switch | Door not latched | Latch door. Wait for wash tank to fill. |
| Cycle time increases with each cycle | Incoming water..... temperature is too low | Raise temperature to 60°C/140°F for all machines. |

REPLACEMENT PARTS

00001

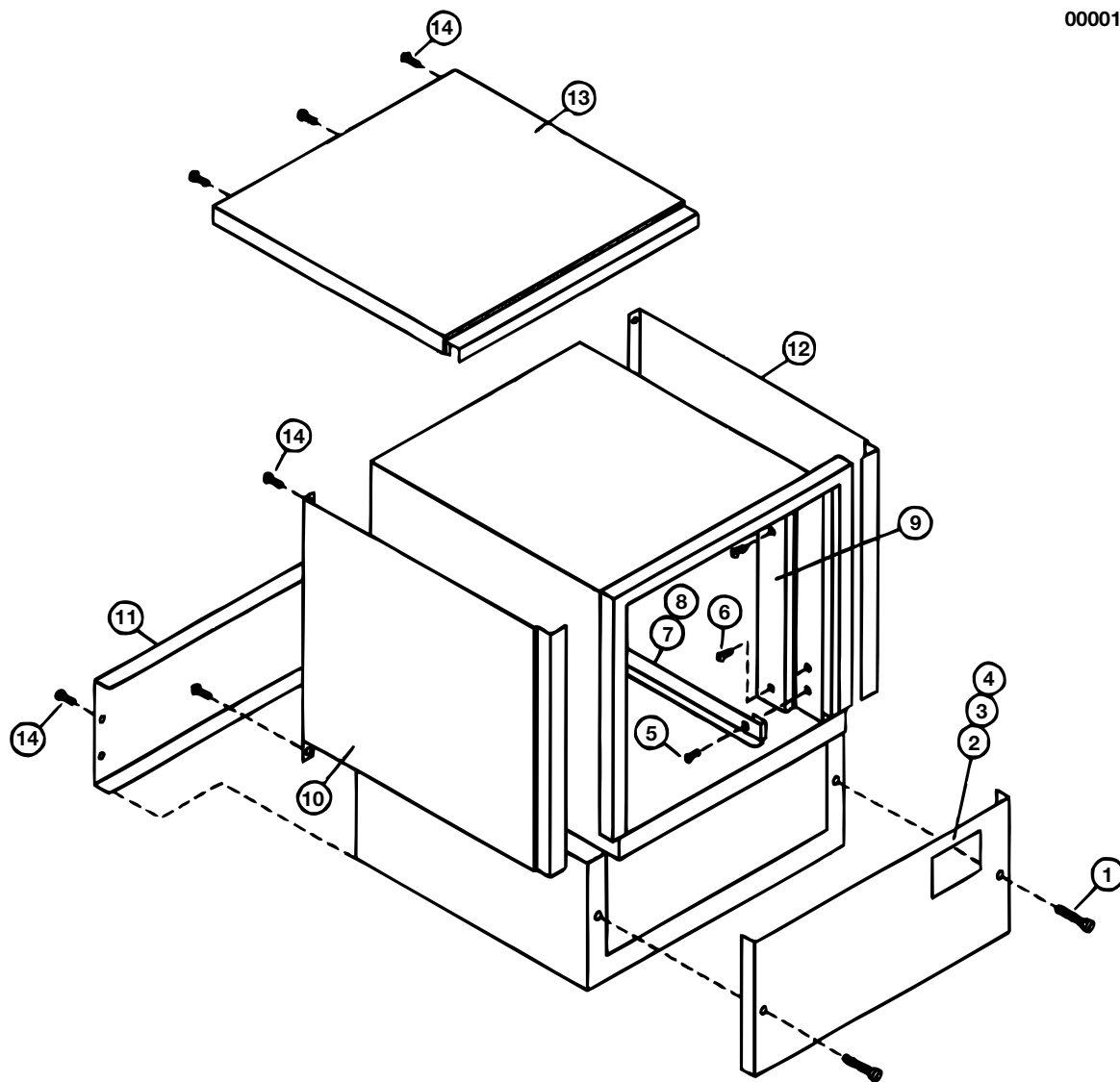


Figure 1 — Track and Panel Assembly

TRACK/PANEL ASSEMBLY

| Fig. 1 | Part | Description | Qty |
|-----------------|-------------|--|------------|
| Item No. | No. | | |
| 1 | 0508751 | Screw, 10-32 x 1-1/2" Lg. Truss Head | 2 |
| 2 | 0308615 | Front Panel (HT, HTN, LT) (Prior to S/N 6795) | 1 |
| 2 | 0308646 | Front Panel (HT, HTN, LT) (S/N 6795 and above) | 1 |
| 3 | 0308646 | Front Panel (UTL, UT, UT-LC) | 1 |
| 4 | 0308748 | Front Panel (UT-MC) | 1 |
| 5 | 0501413 | Screw, 10-32 x 3/8" Lg. Round Head..... | 2 |
| 6 | 0501415 | Screw, 10-32 x 5/8" Lg. Round Head..... | 4 |
| 7 | 0308632 | Track, RH | 1 |
| 8 | 0308631 | Track, LH | 1 |
| 9 | 0708647 | Cover, Vent | 2 |
| 10 | 0308736 | Panel, LH Side (UT, UTL, UT-LC, HT, HTN, LT) | 1 |
| 11 | 0308734 | Panel, Rear (UTL, UT-LC, HT, HTN, LT) | 1 |
| 12 | 0308737 | Panel, RH Side (UT, UTL, UT-LC, HT, HTN, LT) | 1 |
| 13 | 0308735 | Panel, Top (UT, UTL, UT-LC, HT, HTN, LT) | 1 |
| 14 | 0501412 | Screw, 10-32 x 3/8" Lg. Truss Head (UT, UTL, UT-LC)..... | 10 |

00020

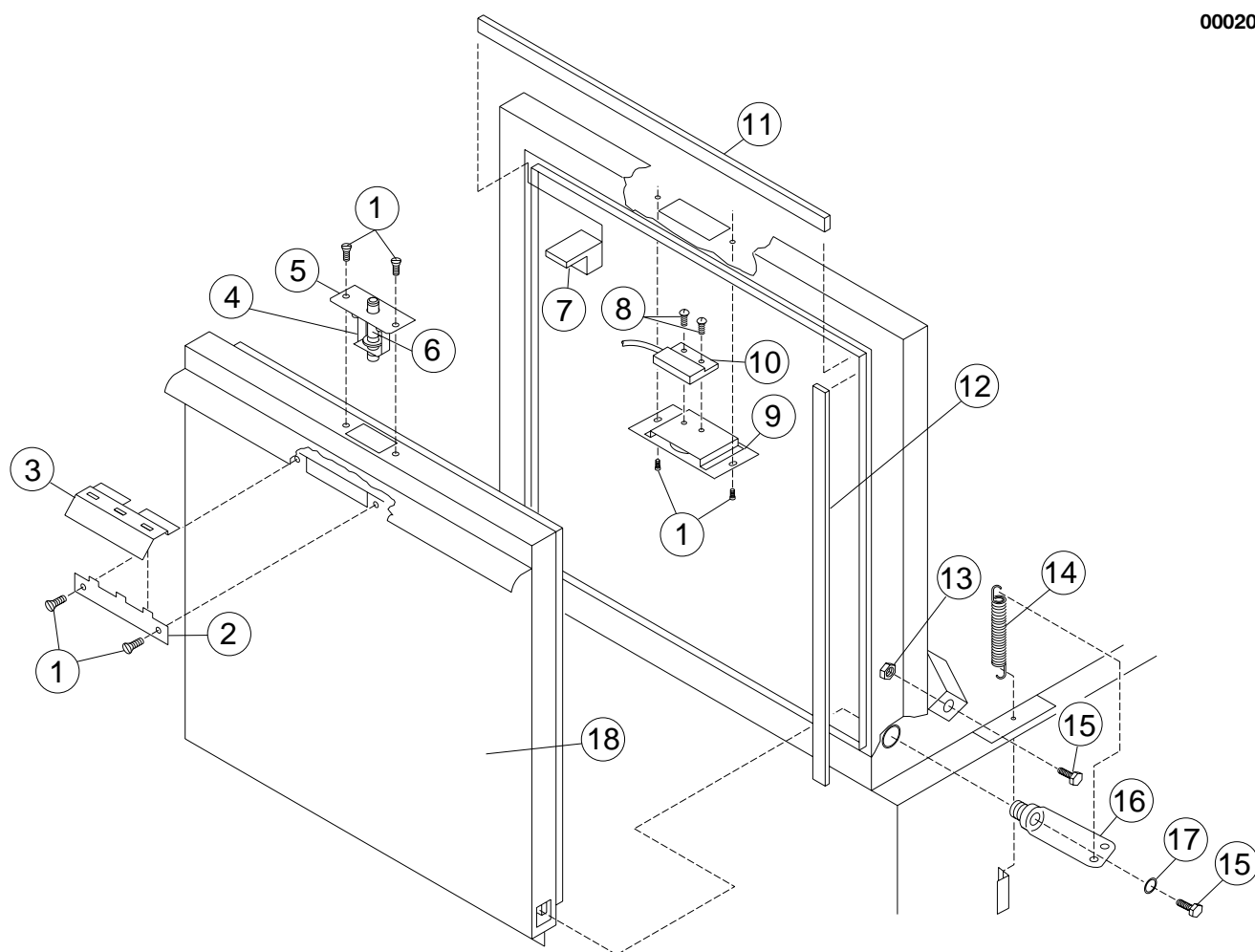


Figure 2 — Door Switch Assembly

DOOR & SWITCH ASSEMBLY
(For Machines Beginning with S/N 6984 and Above)

| Fig. 2 Item No. | Part No. | Description | Qty |
|----------------------------|---------------------|--|------------|
| 1 | 0501412 | Screw, 10-32 x 3/8" Truss Head | 6 |
| 2 | 0308596 | Plate, Door Latch..... | 1 |
| 3 | 0308597 | Handle, Door Latch | 1 |
| 4 | 0508721 | Retaining Ring, Plunger | 1 |
| 5 | 0709462 | Assembly, Door Catch (Includes items 4, 6) | 1 |
| 6 | 0509436 | Plunger, Door Catch | 1 |
| 7 | 0508545 | Gasket, Steam | 2 |
| 8 | 104883 | Screw, Round Head (6-32 x 3/8")..... | 2 |
| 9 | 0709431 | Plate, Door Switch..... | 1 |
| 10 | 111090 | Switch, Door Magnetic Reed | 1 |
| 11 | 0508544 | Gasket, Upper Door..... | 1 |
| 12 | 0508543 | Gasket, Side Door..... | 2 |
| 13 | 0501539 | Nut, Plain 1/4-20 | 2 |
| 14 | 0503715 | Spring, Door Hinge | 2 |
| 15 | 0501421 | Bolt, 1/4-20 x 1-1/4" Hex Head..... | 4 |
| 16 | 0708564 | Arm, Door Hinge..... | 2 |
| 17 | 0501501 | Washer, Lock 1/4" Split | 2 |
| 18 | 0708527 | Door..... | 1 |
| - | 0508555 | Wiring, Harness, Door Switch..... | 1 |
| - | 0708526 | Door Assy. (includes items 1-6, 18) | |

For machines built prior to S/N 6984 order Door Switch Conversion Kit, P/N 0709427.

00004

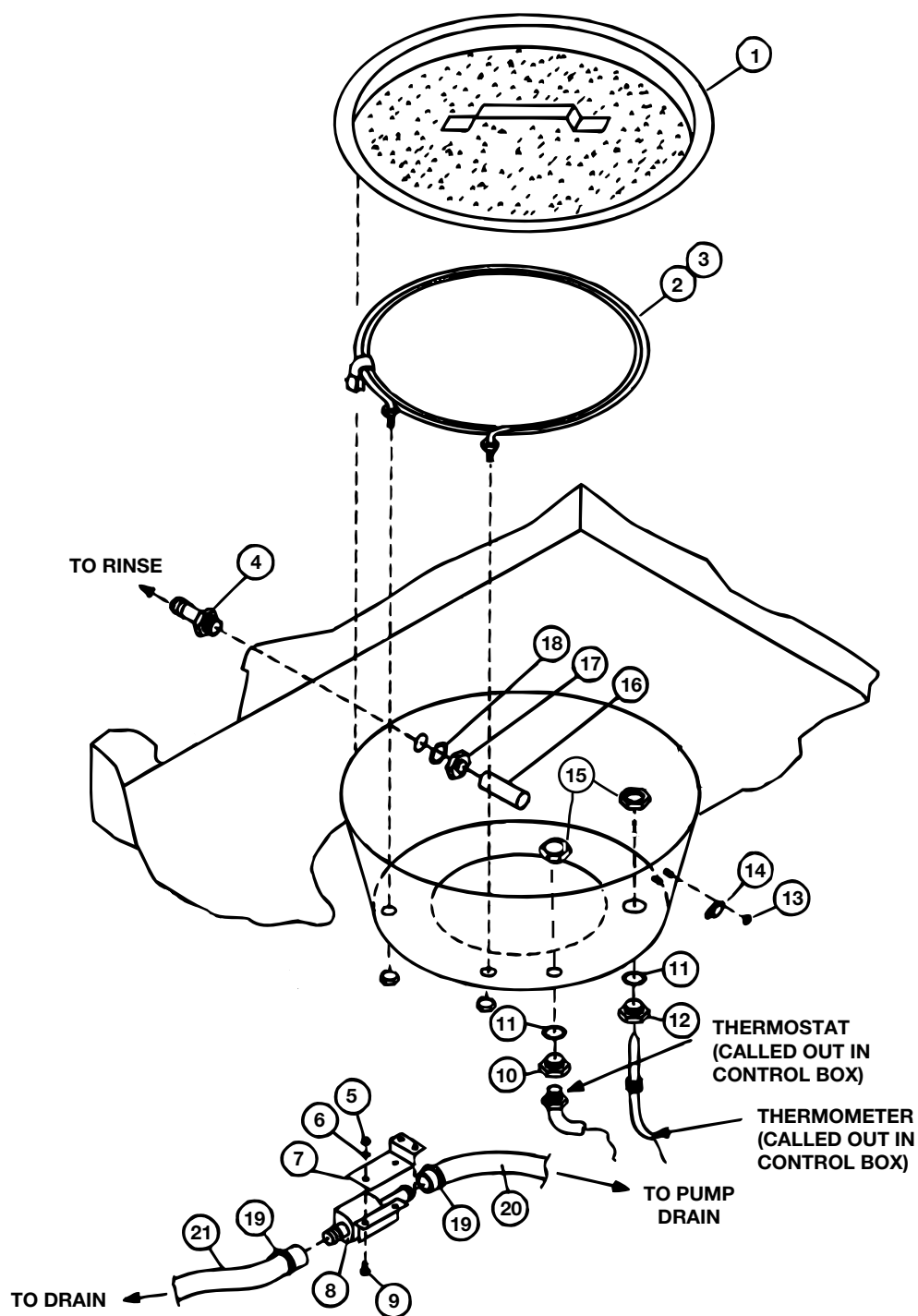


Figure 3 — Tank Heat and Drain

TANK HEAT/DRAIN ASSEMBLY

| Fig. 3 | Part | Description | Qty |
|-----------------|-------------|--|------------|
| Item No. | No. | | |
| 1 | 0508628 | Scrap Screen | 1 |
| 2 | 0508536 | Heater Element 220V-60Hz-1PH (HT, UT, UT-LC) | 1 |
| 3 | 0508537 | Heater Element 110V-60Hz-1PH (HTN, LT, UTL) | 1 |
| 4 | 0508578 | Adapter, Pump Tube | 1 |
| 5 | 0501539 | Nut, Plain 1/4-20 | 2 |
| 6 | 0501501 | Washer, Lock, 1/4" Split | 2 |
| 7 | 0308611 | Support, Drain Valve | 1 |
| 8 | 0306618 | Valve, Drain | 1 |
| 9 | 0501418 | Screw, 1/4-20 x 1/2" Lg. Round Head | 2 |
| 10 | 0508873 | Adapter, Thermostat | 1 |
| 11 | 0501836 | O-Ring, Thermostat | 2 |
| 12 | 0508872 | Adapter, Thermometer | 1 |
| 13 | 108954 | Nut, Grip 6-32 w/Nylon Insert | 2 |
| 14 | 110562 | Thermostat, High-Limit | 1 |
| 15 | 201029 | Locknut, 1/2 NPT Nickel-Plated | 2 |
| 16 | 0308655 | Tube, Pump Outlet | 1 |
| 17 | 0508579 | Nut, Jam 1"-8 | 1 |
| 18 | 104414 | O-Ring | 1 |
| 19 | 0510082 | Clamp, Hose | 2 |
| 20 | 0507265 | Hose, 5/8" ID x 7/8" OD PVC Braided | A/R |
| 21 | 0509302 | Hose, 5/8" ID x 1" OD PVC Braided | 6 Ft. |

00005

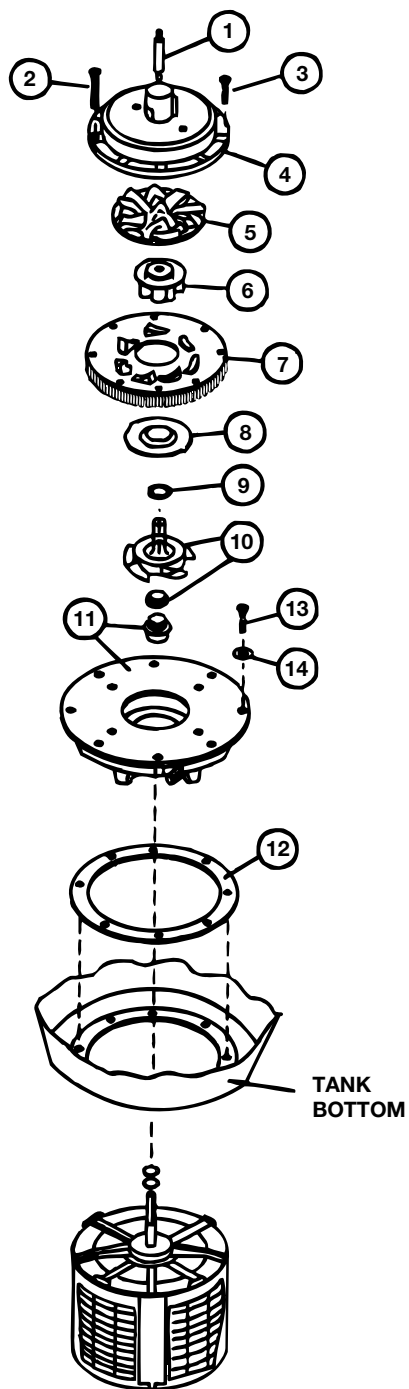


Figure 4 — Pump Assembly

PUMP ASSEMBLY

| Fig. 4 Item No. | Part No. | Description | Qty |
|----------------------------|---------------------|---|------------|
| 1 | 0508542 | Spindle, Lower Wash Arm | 1 |
| 2 | 0501431 | Screw, 8-32 x 1-1/8" Round Head..... | 4 |
| 3 | 0501425 | Screw, 8-32 x 5/8" Round Head | 4 |
| 4 | 0508793 | Housing, Diffuser | 1 |
| 5 | 0502741 | Diffuser..... | 1 |
| 6 | 0502704 | Impeller | 1 |
| 7 | 0502746 | Adapter Plate, Suction..... | 1 |
| 8 | 0502745 | Plate, Drain Inlet..... | 1 |
| 9 | 0502703 | O-ring | 1 |
| 10 | 0502744 | Propeller/Rotating Seal Assembly | 1 |
| 11 | 0502743 | Mounting Plate/Seal Assembly (Includes Item 10)..... | 1 |
| 12 | 0501881 | Gasket, Pump | 1 |
| 13 | 0508665 | Screw, 10-32 x 5/8" Hex Washer Head | 8 |
| 14 | 0508570 | Washer, Sealing Teflon..... | 8 |
| - | 0710071 | Pump/Motor Assembly (Includes items 1-11)* | 1 |
| - | 107966 | Nut, Grip 10-32, SST (Not Shown) (For mounting Item 1)..... | 1 |

* Motor not available as a separate repair part

00006

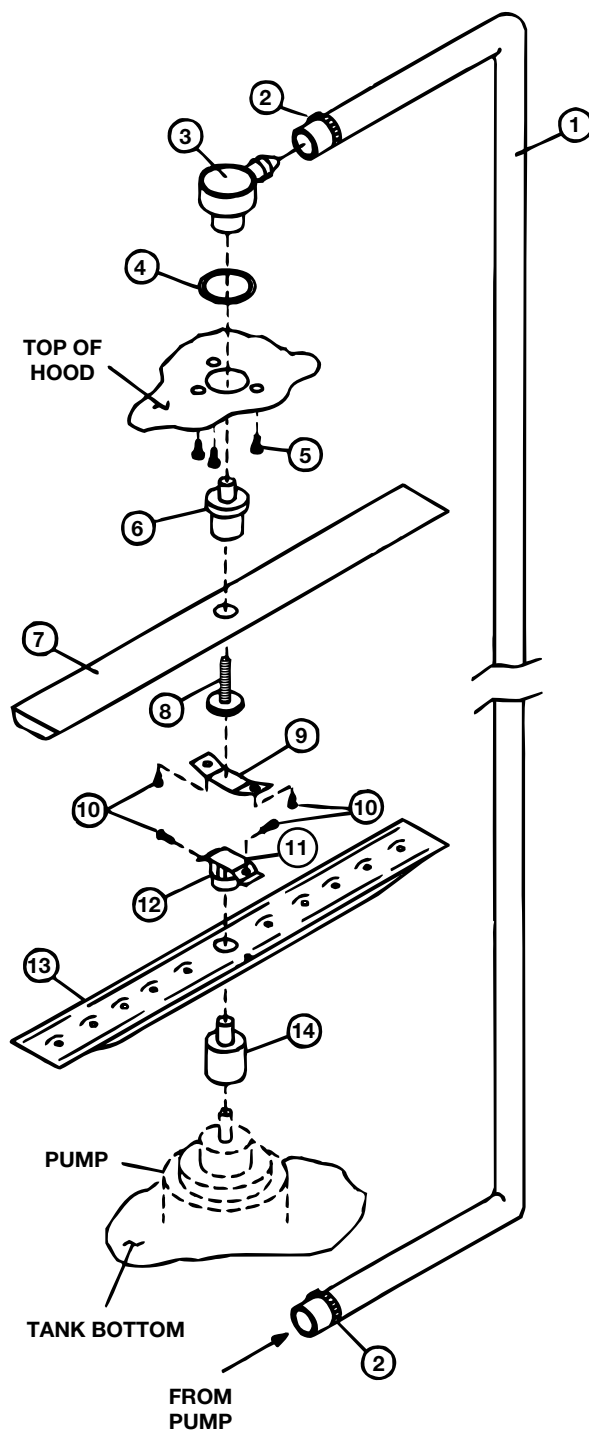


Figure 5 — Wash System Assembly

WASH SYSTEM ASSEMBLY

| Fig. 5 | Part | Description | Qty |
|-----------------|-------------|--|------------|
| Item No. | No. | | |
| 1 | 0508549 | Hose, Upper Wash | 1 |
| 2 | 0502563 | Clamp, Hose 1" | 2 |
| 3 | 0708650 | Spindle, Upper Wash Arm..... | 1 |
| 4 | 0503588 | O-ring, 1-1/8" x 1-3/8" | 1 |
| 5 | 0501412 | Screw, 10-32 x 3/8" Lg. Truss Head..... | 3 |
| 6 | 0508541 | Bushing, Upper Wash Arm..... | 1 |
| 7 | 0705047 | Wash Arm, Upper | 1 |
| 8 | 0505042 | Pivot, Upper Wash Arm..... | 1 |
| 9 | 0308783 | Retainer, Upper Pivot S/A | 1 |
| 10 | 0501563 | Screw, #8 x 3/8" (Sheet Metal) Truss Head..... | 4 |
| 11 | 0308158 | Nut Clip, Spray Arm..... | 1 |
| 12 | 0501684 | Nut, Spray Arm Lock | 1 |
| 13 | 0705049 | Wash Arm, Lower..... | 1 |
| 14 | 0508540 | Bushing, Lower Wash Arm | 1 |
| - | 0708874 | Lower Wash Arm Assembly (includes items 10-14) | |

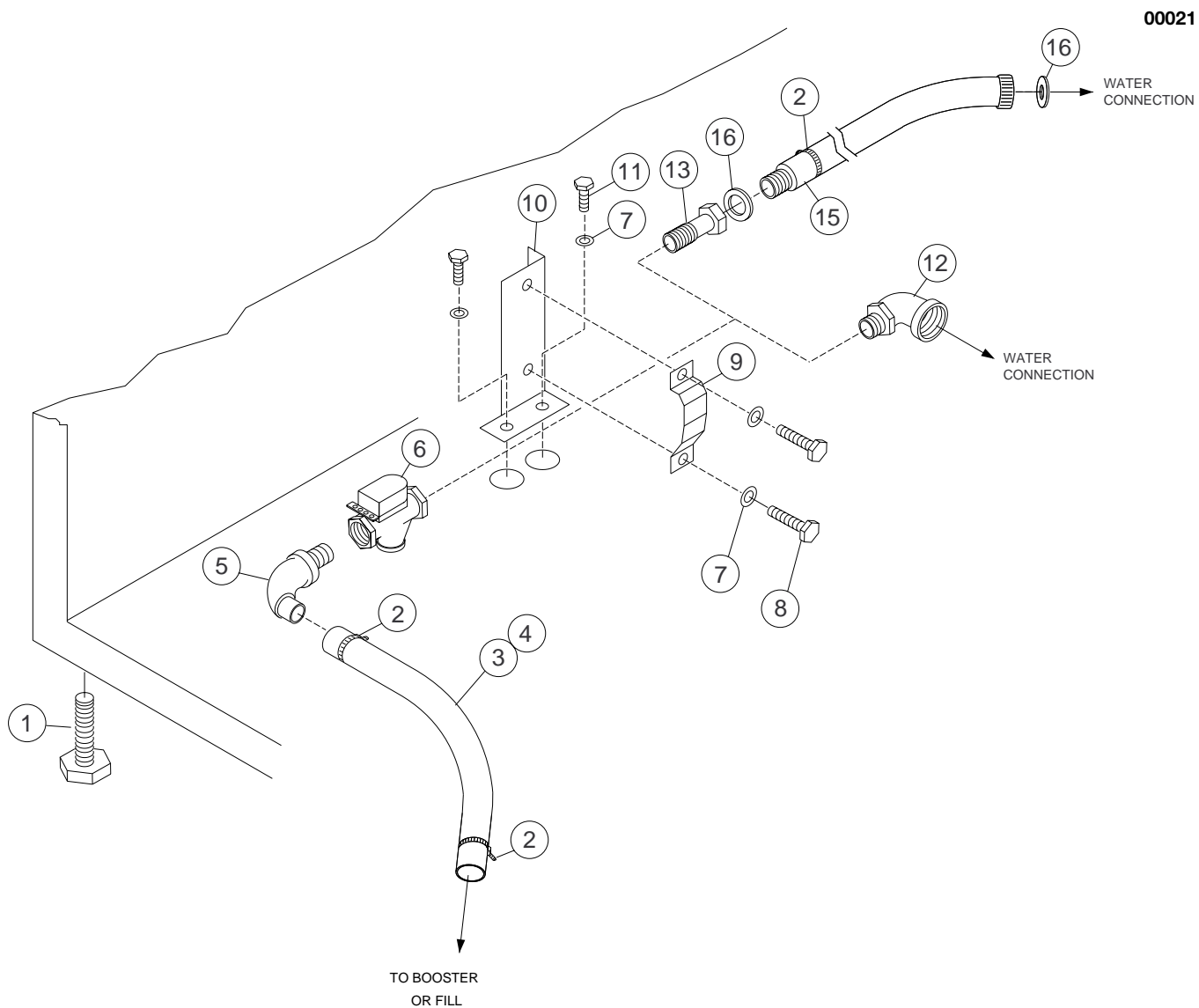


Figure 6 — Water Inlet Piping

WATER INLET PIPING ASSEMBLY

| Fig. 6 Item No. | Part No. | Description | Qty |
|----------------------------------|---------------------------|---|------------|
| 1 | 0503718 | Foot, Adjustable | 4 |
| 2 | 0503679 | Clamp, Hose | 2 |
| 3 | 107417 | Hose 1/2" I.D. (all except HTN) | A/R |
| 4 | 107417 | Hose 1/2" I.D. (HTN)..... | A/R |
| 5 | 0502653 | Elbow, 3/8 MPT x 1/2" Hose x 90° Brass | 1 |
| 6 | 0504952 | Valve, Solenoid 3/8 NPT..... | 1 |
| - | 0502811 | Repair Kit, 3/8" NPT Solenoid Valve..... | 1 |
| - | 0505235 | Coil, 115V, 3/8" NPT Solenoid Valve | 1 |
| - | 0504958 | Flow Washer, 3/8" NPT Solenoid Valve | 1 |
| 7 | 0501501 | Washer, Lock 1/4" Split..... | 4 |
| 8 | 0501419 | Bolt, 1/4-20 x 1/2" Lg. Hex Head | 2 |
| 9 | 0300203 | Clamp, Valve Support | 1 |
| 10 | 0300065 | Support, Fill Valve..... | 1 |
| 11 | 0501424 | Bolt, 1/4-20 x 3/8" Lg. Hex Head | 2 |
| 12 | 0503713 | Elbow, Street 3/8 MPT x 1/2 FPT Brass (HT, HTN, LT)..... (Prior to S/N 6795) | 1 |
| 13 | 0502618 | Coupler, 3/8 MPT x 1/2" Hose barb..... | 1 |
| 14 | 0503679 | Clamp, Hose | 1 |
| 15 | 0509526 | Hose, Coupled 7 ft..... | 1 |
| 16 | 0505320 | Washer, Hose | 1 |

00018

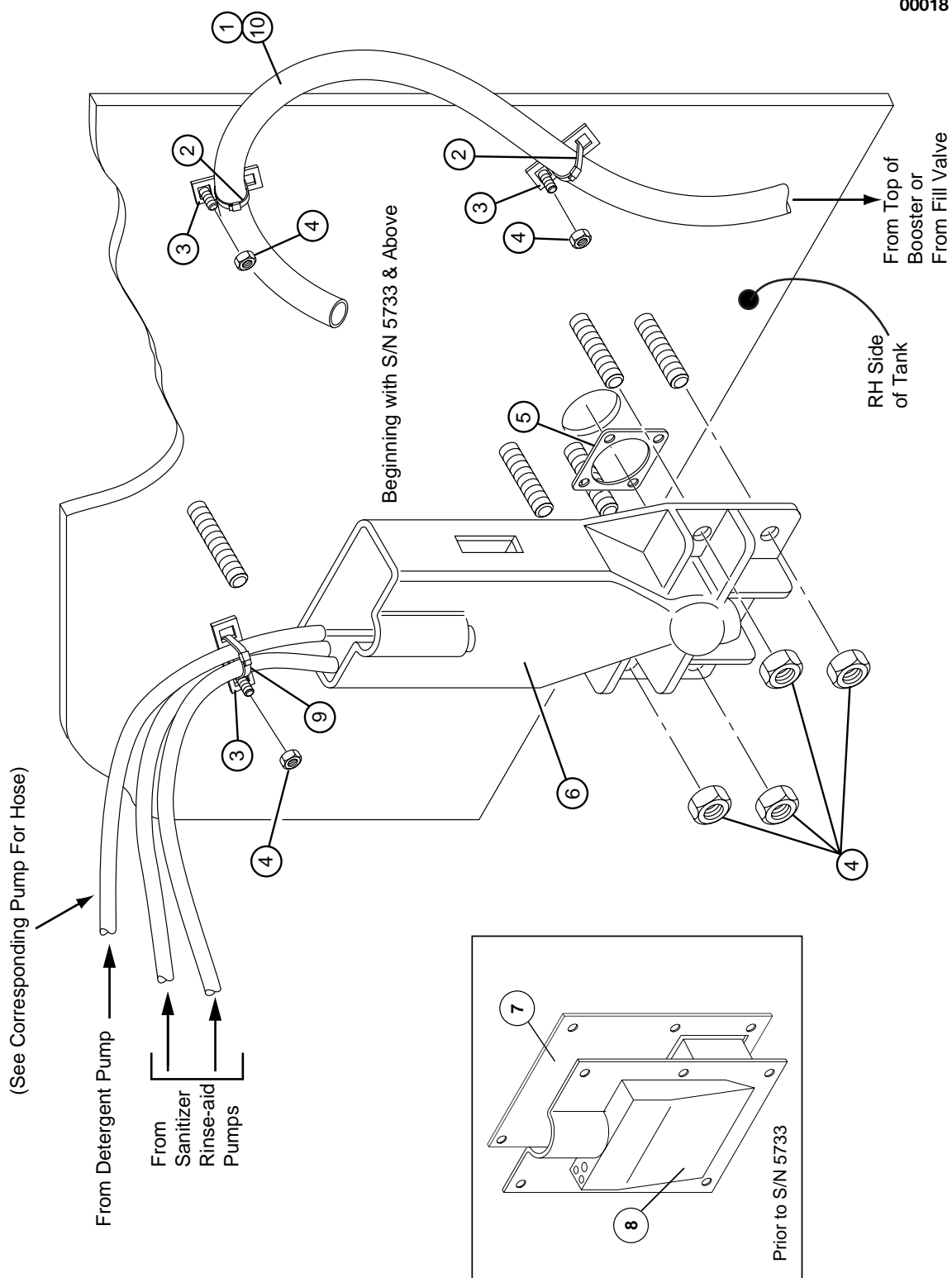


Figure 7 — Fill System

FILL SYSTEM
All Models

| Fig. 7 Item No. | Part No. | Description | Qty |
|----------------------------|---------------------|--|------------|
| 1 | 107417 | Hose, 1/2" I.D. (HT, LT, UTL) | A/R |
| 2 | 0501518 | Tie Wrap, Hose..... | 2 |
| 3 | 106090 | Bracket, Tie Wrap | 2 |
| 4 | 107966 | Nut, Grip, 10-32 w/Nylon Insert | 8 |
| 5 | 0509048 | Gasket, Inlet Chute (Beginning with S/N 5733 & above)..... | 1 |
| 6 | 0508867 | Inlet Chute (Beginning with S/N 5733 & above)..... | 1 |
| 7 | 0508656 | Gasket, Inlet Chute (Prior to S/N 5733) | 1 |
| 8 | 0508609 | Inlet Chute (Prior to S/N 5733) | 1 |
| 9 | 0501519 | Tie Wrap, Chemical Hose | 3 |
| 10 | 107417 | Hose, Fill 1/2" I.D. (White) (all except HT, LT, UTL)..... | 3 ft. |

00017

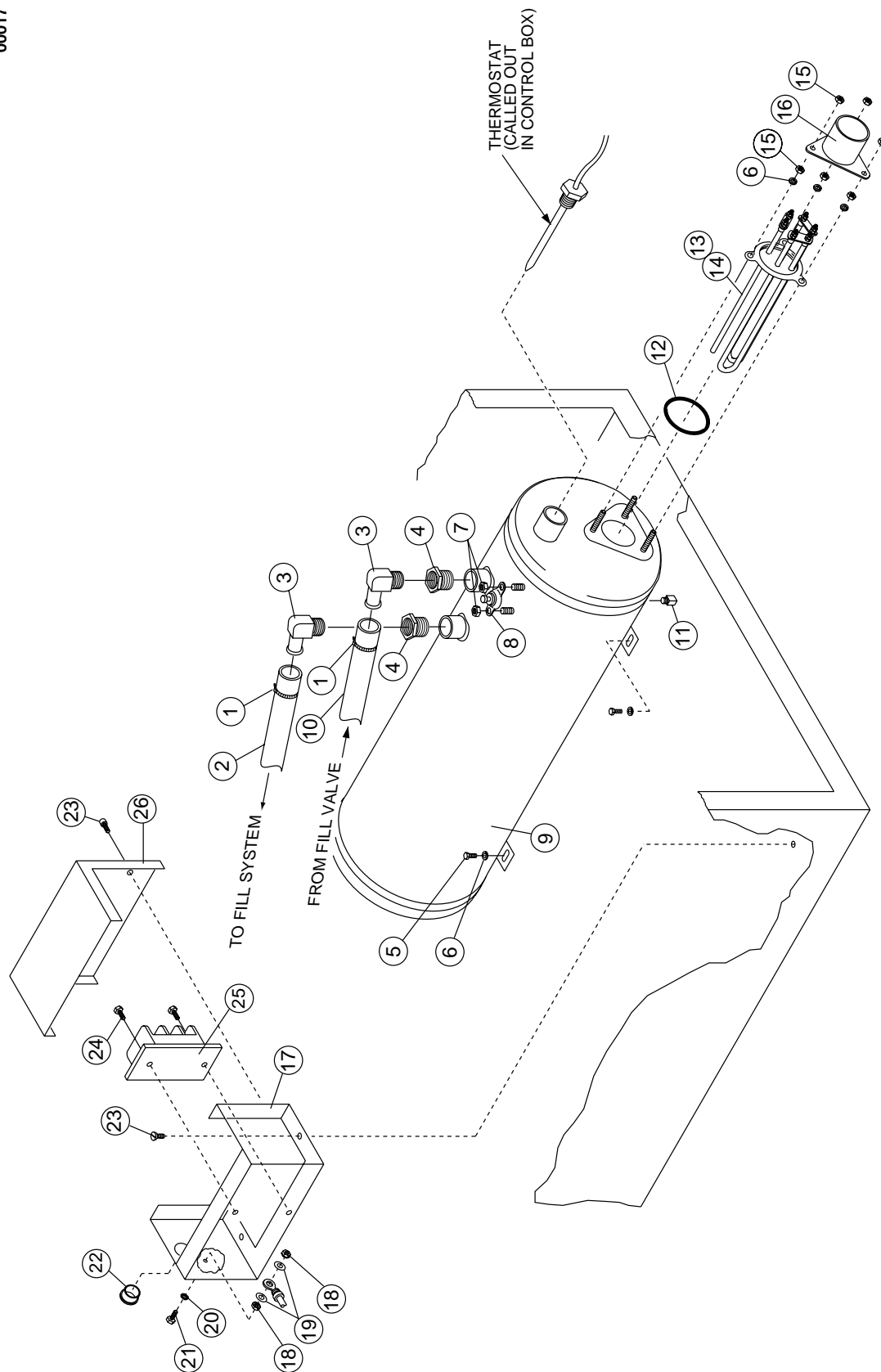


Figure 8 — Booster Assembly

BOOSTER ASSEMBLY
(Includes Models HT, UT, UT-LC)

| Fig. 8 | Part | Description | Qty |
|-----------------|-------------|--|------------|
| Item No. | No. | | |
| 1 | 0503679 | Clamp, Hose | 2 |
| 2 | 107417 | Hose, 1/2" I.D. (42") | 3 ft. |
| 3 | 0502653 | Elbow, 3/8 MPT x 1/2" Hose x 90° Brass | 2 |
| 4 | 0508840 | Bushing, Reducing 3/4 NPT x 3/8 NPT Brass | 2 |
| 5 | 0501419 | Bolt, 1/4-20 x 1/2" Lg. Hex Head | 2 |
| 6 | 0501501 | Washer, Lock 1/4" Split..... | 5 |
| 7 | 108954 | Nut, Grip 6-32 w/Nylon Insert | 2 |
| 8 | 110562 | Thermostat, High Limit..... | 1 |
| 9 | 0508779 | Tank, Booster (Prior to S/N 5713)..... | 1 |
| 9 | 0509042 | Tank, Booster (Beginning with S/N 5713 and above)..... | 1 |
| 10 | 107417 | Hose 1/2" I.D. (28") | A/R |
| 11 | 0508709 | Pipe Plug, 1/8 NPT Brass | 1 |
| 12 | 109985 | O-Ring | 1 |
| 13 | 111233 | Heater Element, 9KW (70° Rise) 208/230V-60Hz-1Ph..... | 1 |
| 14 | 111235 | Heater Element, 6KW (40° Rise) 208/230V-60Hz-1Ph..... | 1 |
| 15 | 0501539 | Nut, Plain 1/4-20 | 6 |
| 16 | 107908 | Cover, Heater Element | 1 |
| 17 | 0308638 | Body, Junction box | 1 |
| 18 | 0501533 | Nut, Plain 10-32 Brass | 2 |
| 19 | 0501472 | Washer, Flat #10 Brass | 2 |
| 20 | 0501493 | Washer, Lock #10 Ext. Tooth Brass | 1 |
| 21 | 0501403 | Screw, 10-32 x 3/4" Lg. Round Head Brass..... | 1 |
| 22 | 107964 | Bushing, Snap..... | 1 |
| 23 | 0501412 | Screw, 10-32 x 3/8" Lg. Truss Head..... | 4 |
| 24 | 0504538 | Screw, 10-32 x 3/8" Lg. Truss Head Steel..... | 2 |
| 25 | 0504951 | Terminal Block | 1 |
| 26 | 0308627 | Cover, Junction Box | 1 |
| - | 110997 | Wire, Jumper, Heater Element (Not Shown)..... | 1 |
| - | 0307356 | Insulation, Heater Terminal (Not Shown) | 1 |
| - | 0508397 | Label, Cover Warning (Not Shown)..... | 1 |

00022

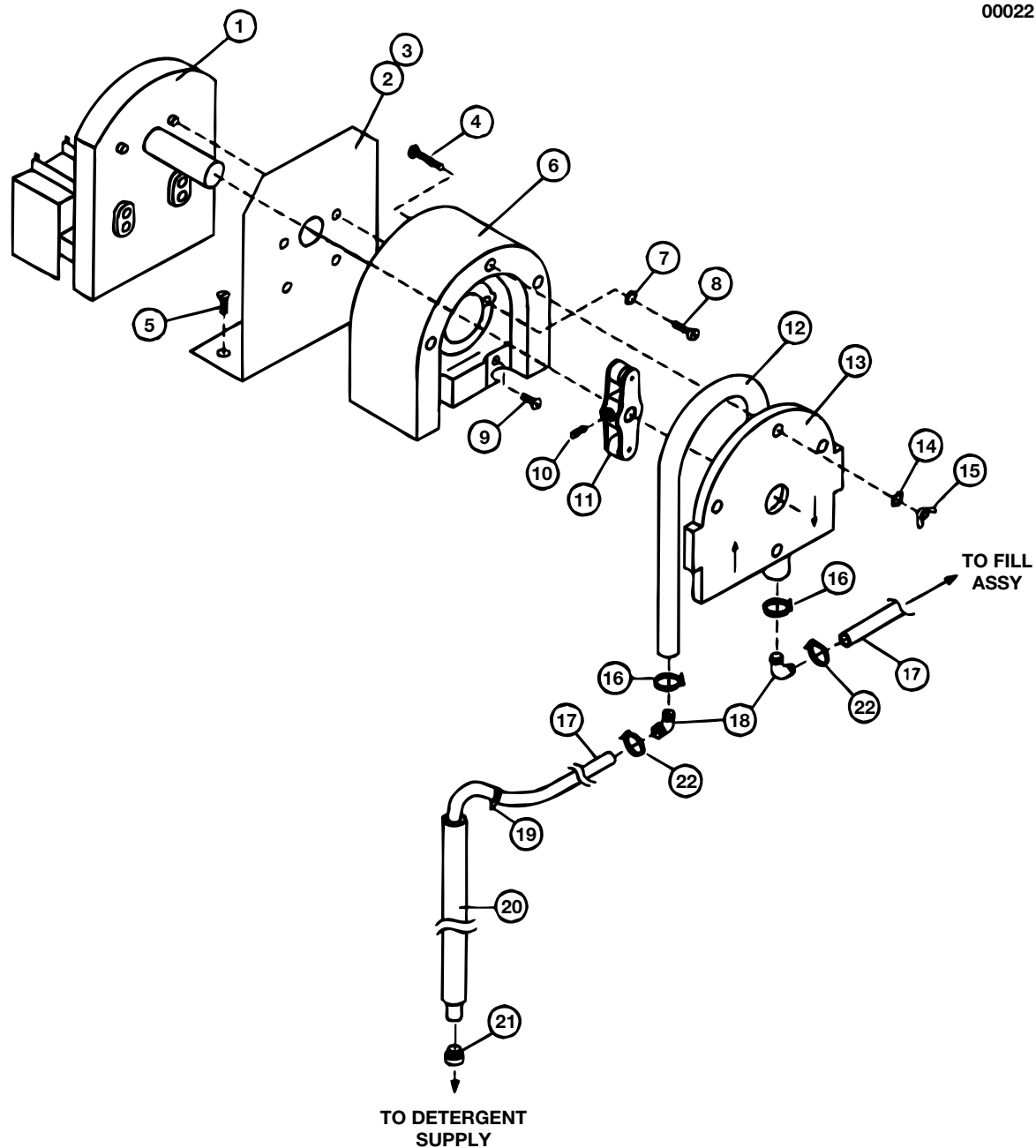


Figure 9 — Detergent Pump Assembly

DETERGENT PUMP ASSEMBLY
All Models

| Fig. 9 Item No. | Part No. | Description | Qty |
|----------------------------|---------------------|---|------------|
| 1 | 0503757 | Motor, Pump..... | 1 |
| 2 | 0308637 | Bracket, Detergent Pump (all except LT)..... | 1 |
| 3 | 0308610 | Bracket, Detergent/Sanitizer Pumps (LT) | 1 |
| 4 | N/A | Screw, M4 x 35mm Hex Head | 4 |
| 5 | 0501412 | Screw, 10-32 x 3/8" Lg. Truss Head..... | 2 |
| 6 | N/A | Housing, Pump..... | 1 |
| 7 | 0501497 | Washer, Lock #8 Split | 2 |
| 8 | 0504822 | Screw, 8-32 x 1/2" Lg. Pan Head | 2 |
| 9 | 0501425 | Screw, 8-32 x 5/8" Round Head | 2 |
| 10 | N/A | Screw, Set M6 x 8mm | 1 |
| 11 | N/A | Rotor Assembly..... | 1 |
| 12 | 108194 | Hose, Pump | 1 |
| 13 | N/A | Cover, Pump Housing | 1 |
| 14 | N/A | Washer, Flat M4 | 4 |
| 15 | N/A | Nut, Wing M4..... | 4 |
| 16 | 0501519 | Tie Wrap, Hose..... | 2 |
| 17 | 0502667 | Hose, Detergent, 1/4" I.D. PVC (Clear) | A/R |
| 18 | 0502644 | Elbow, 1/4" O.D. x 90° Barbed | 2 |
| 19 | 0503695 | Label, Detergent..... | 1 |
| 20 | 0306363 | Tube, Pick-Up | 1 |
| 21 | 0501869 | Strainer, Pick-Up Tube | 1 |
| 22 | 0501519 | Tie Wrap, Hose..... | 2 |
| - | 109829 | Pump Head Assy. (includes items 4, 6, 10-15) | |
| - | 0708559 | Pump/Motor Assy. (includes items 1, 2, 4, 6-16, 18) | |

00002

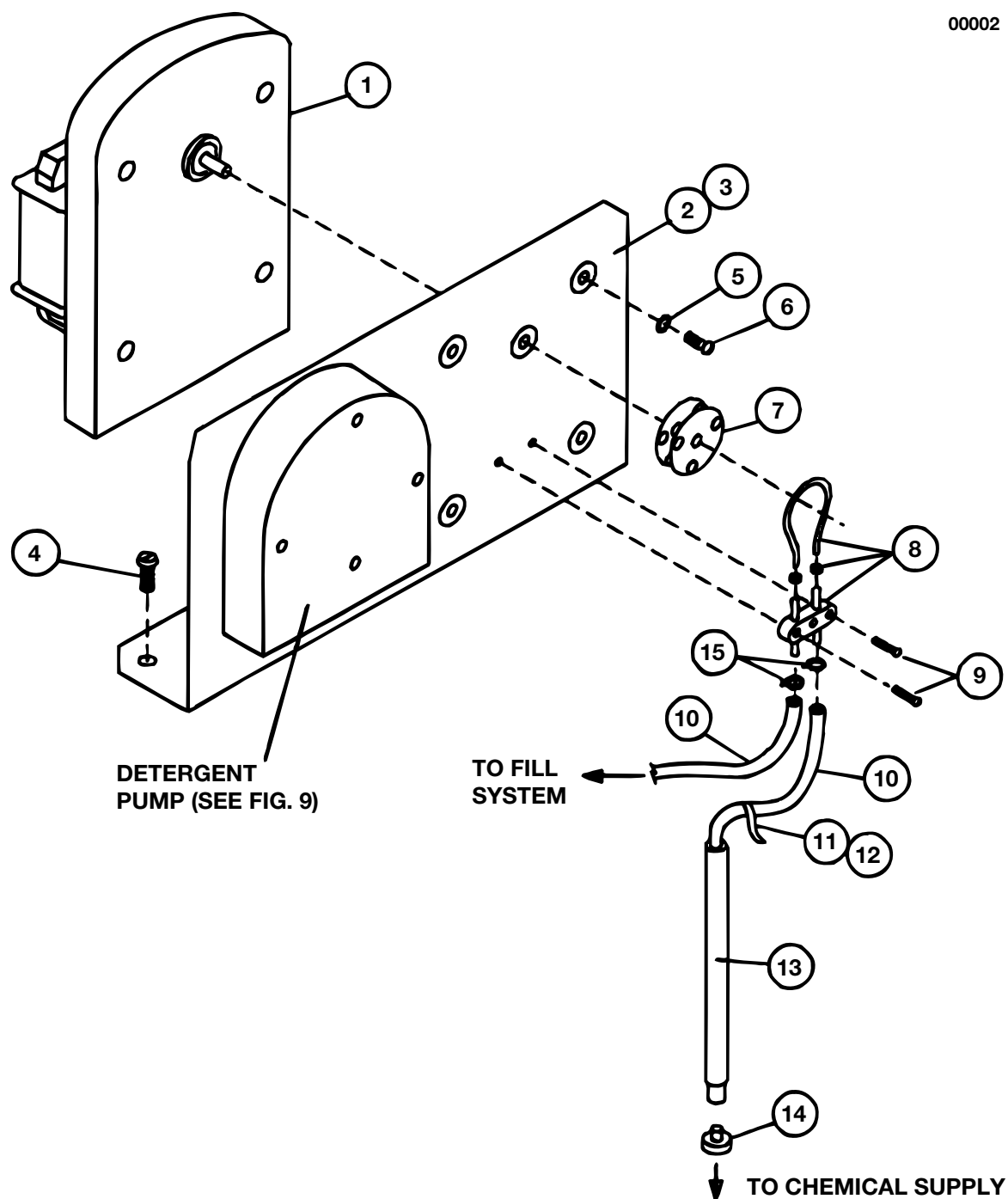


Figure 10 — Sanitizer/Rinse Aid Pump Assembly

**SANITIZER/RINSE AID PUMP
LT/UTL**

| Fig. 10 Item No. | Part No. | Description | Qty |
|-----------------------------|---------------------|--|------------|
| 1 | 0503756 | Motor, Pump..... | 1 |
| 2 | 0308610 | Bracket, Detergent/Sanitizer Pump (LT)..... | 1 |
| 3 | 0308697 | Bracket, Rinse-Aid Pump (Optional)..... | 1 |
| 4 | 0501412 | Screw, 10-32 x 3/8" Lg. Truss Head..... | 2 |
| 5 | 0501497 | Washer, Lock #8 Split | 4 |
| 6 | 0504822 | Screw, 8-32 x 1/2" Lg. Pan Head | 4 |
| 7 | 0707142 | Rotor Assy..... | 1 |
| 8 | 0706635 | Element Tube Assy (45 ^{cc} /min)..... | 1 |
| 9 | 0506589 | Screw, 6-32 x 7/8" Lg. Pan Head | 2 |
| 10 | 0502666 | Hose, 1/8" I.D. PVC (Clear)..... | A/R |
| 11 | 0503694 | Label, Sanitizer (LT) | 1 |
| 12 | 0505483 | Label, Rinse-Aid (Optional)..... | 1 |
| 13 | 0306363 | Tube, Pick-Up | 1 |
| 14 | 0501869 | Strainer, Pick-up Tube..... | 1 |
| 15 | 0501519 | Tie Wrap, Hose..... | 2 |
| - | 0708561 | Detergent/Sanitizer Pump Assy. (LT)..... (Includes Detergent Pump and Items 1,2, 5-9) | 1 |
| - | 0708754 | Rinse-Aid Pump Assy. (Optional) (Includes Items 1,3-10, 12-15) | |

00003

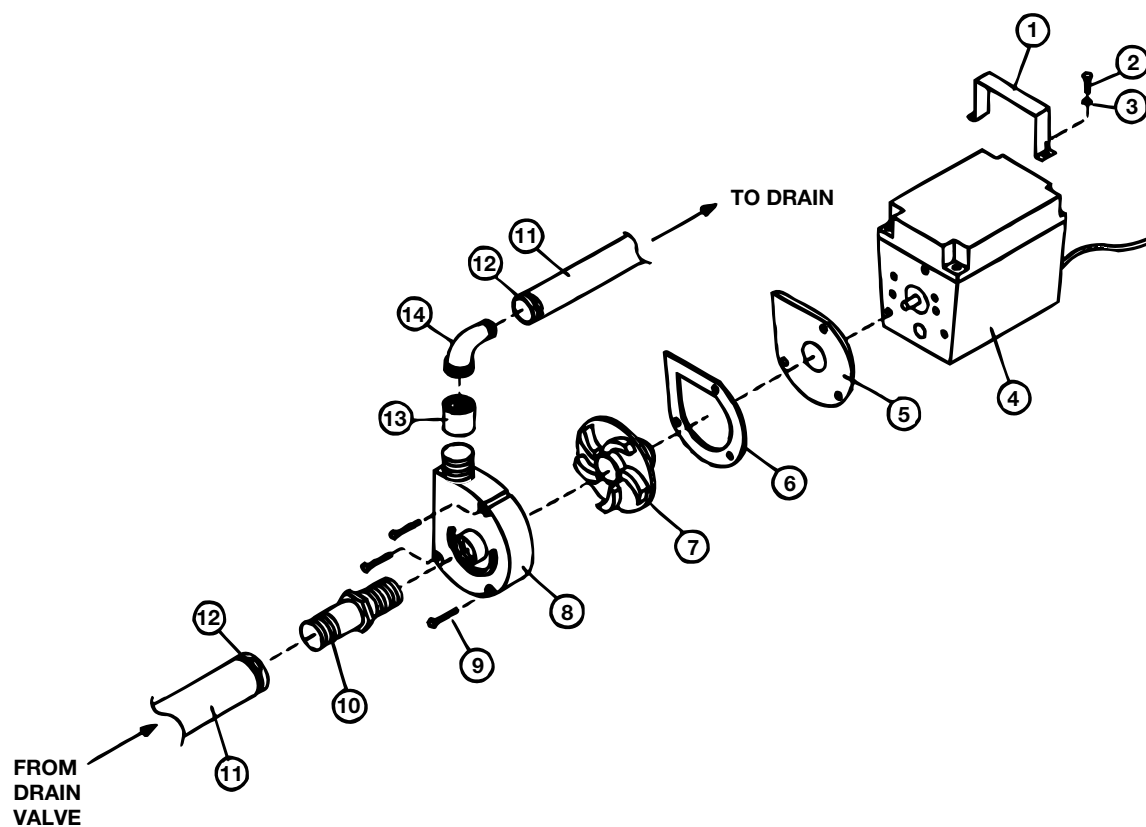


Figure 11 — Drain Pump Assembly

DRAIN PUMP ASSEMBLY
501 UTL, UT-LC

| Fig. 11 Item No. | Part No. | Description | Qty |
|-----------------------------------|---------------------------|--|------------|
| 1 | 0308119 | Bracket, Pump Hold Down | 1 |
| 2 | 0501419 | Bolt, 1/4-20 x 1/2" Lg. Hex Head | 2 |
| 3 | 0501501 | Washer, Lock 1/4" Split..... | 2 |
| 4 | N/A | Motor, Pump..... | 1 |
| 5 | N/A | Backing Plate, Pump | 1 |
| 6 | 0508370 | Gasket, Pump Volute | 1 |
| 7 | 0508369 | Impeller, Pump | 1 |
| 8 | 0508368 | Volute, Pump | 1 |
| 9 | N/A | Screw, 10-24 x 1-5/8" Lg. Pan Head | 3 |
| 10 | 0508141 | Adapter, 3/4 MPT x 1/2" Hose Barb PVC | 1 |
| 11 | 0507265 | Hose, 5/8" I.D. x 7/8 O.D., Braided | A/R |
| 12 | 0503679 | Clamp, Hose | 2 |
| 13 | 0508139 | Coupling, 1/2" NPT PVC..... | 1 |
| 14 | 0508140 | Elbow, 1/2 MPT x 1/2" Hose Barb x 90° PVC | 1 |
| - | C35065 | Drain Pump Assy. (Includes Items 4-9) (UTL, UT-LC) | |

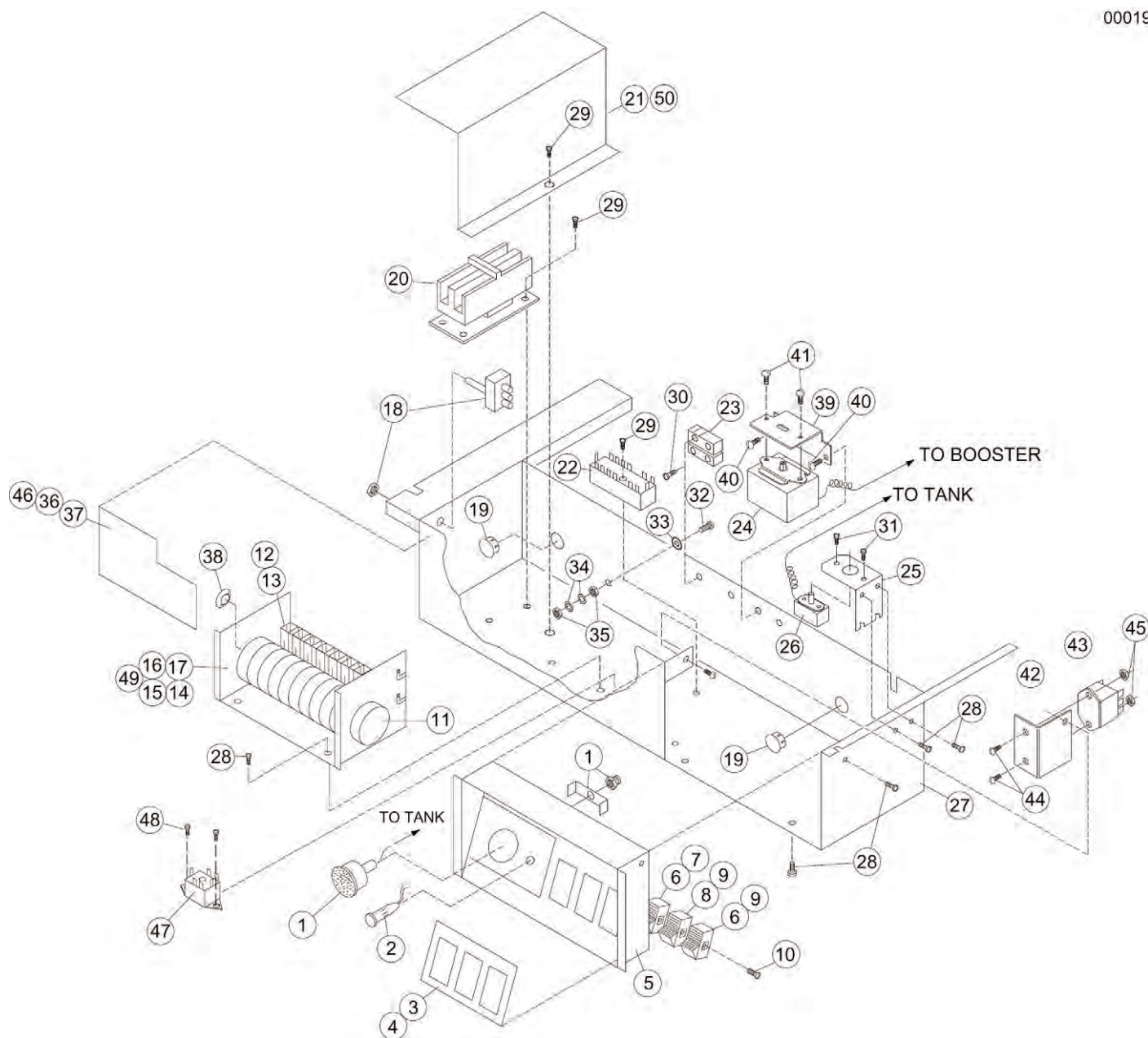


Figure 12 — Control Cabinet

CONTROL CABINET ASSEMBLY
HT, HTN, LT, UTL, UT, UT-LC

| Fig. 12 Item No. | Part No. | Description | Qty |
|-----------------------------|---------------------|--|------------|
| 1 | 0512107 | Thermometer, 4Ft. Gas Filled (Replaces 108391)..... | 1 |
| 2 | 0508551 | Lamp, Green..... | 1 |
| 3 | 0508522 | Decal, Control Panel (All except LT, UTL)..... | 1 |
| 4 | 0508553 | Decal, Control Panel (LT, UTL)..... | 1 |
| 5 | 0708635 | Control Panel..... | 1 |
| 6 | 0501361 | Switch, Rocker (HT, HTN, UT, UT-LC)..... | 2 |
| 7 | 0501361 | Switch, Rocker (LT, UTL)..... | 1 |
| 8 | 0501369 | Switch, Rocker Spring-Return (HT, HTN, UT, UT-LC)..... | 1 |
| 9 | 0501369 | Switch, Rocker, Spring-Return (LT, UTL)..... | 2 |
| 10 | 0504911 | Screw #6 x 1/4" Lg. (Sheet Metal) Pan Head | 6 |
| 11 | 0504956 | Motor, Timer | 1 |
| 12 | 0501379 | Switch, Timer (HT, HTN, UT, UT-LC)..... | A/R |
| 13 | 0501379 | Switch, Timer (LT, UTL)..... | A/R |
| 14 | 0708538 | Timer Assy. (8 cams) (HT, HTN, UT, UT-LC)..... (Prior to S/N W7604) (Includes items 11,12,38) | 1 |
| 15 | 0710583 | Timer Assy. (9 cams) (HT, HTN, UT, UT-LC)..... (Beginning with S/N W7604 & above) (Includes items 11,12,38) | 1 |
| 16 | 0708590 | Timer Assy. (9 cams) (LT, UTL) (Includes items 11,12,38)..... | 1 |
| 17 | ----- | Item No. 17 is no longer active in this parts list | ---- |
| 18 | 0501373 | Switch, Toggle, 3-Position (All except HTN, LT, UTL)..... | 1 |
| 19 | 107964 | Bushing, Snap..... | 2 |
| 20 | 0508554 | Contactor, 2-Pole, 50 Amp 240V (All except HTN, LT, UTL)..... | 1 |
| 21 | 0308641 | Cover, Contactor (All except HTN, LT, UTL) | 1 |
| 22 | 0503749 | Terminal Block..... | 1 |
| 23 | 0501358 | Relay, Start..... | 1 |
| 24 | 109069 | Thermostat, Booster w/capillary (All except HTN, LT, UTL) | 1 |
| 25 | 0300096 | Bracket, Tank Heat Thermostat | 1 |
| 26 | 0501380 | Thermostat, Tank Heat, w/capillary, Wash Tank..... | 1 |
| 27 | 0708525 | Control Box..... | 1 |
| 28 | 0501412 | Screw, 10-32 x 3/8" Truss Head | 11 |
| 29 | 0503648 | Screw, 8-32 x 1/4" Pan Head | 4 |
| 30 | 0501463 | Screw, 8-32 x 1" Round Head..... | 2 |
| 31 | 0501450 | Screw, 6-32 x 1/4" Round Head..... | 1 |
| 32 | 0501403 | Screw, 10-32 x 3/4" Round Head Brass..... | 1 |
| 33 | 0501493 | Washer, Lock #10 Ext. Tooth | 1 |
| 34 | 0501472 | Washer, Flat #10 Brass..... | 2 |
| 35 | 0501533 | Nut, Plain 10-32 Brass | 2 |
| 36 | 0508572 | Label, Cam (HT, HTN, UT, UT-LC)..... (Prior to S/N W7604) | 1 |
| --- | 0508572-1 | Label, Cam (HT, HTN, UT, UT-LC)..... (Beginning with S/N W7604 and above) | 1 |
| 37 | 0508589 | Label, Cam (LT, UTL)..... | 1 |

CONTROL CABINET ASSEMBLY (cont.d)
HT, HTN, LT, UTL, UT, UT-LC

| Fig. 12 Item No. | Part No. | Description | Qty |
|-----------------------------|---------------------|---|------------|
| 38 | 0503701 | Bearing, Timer Shaft..... | 1 |
| --- | 0501292 | Power Cord, (HTN, LT, UTL) Not Shown..... | 1 |
| 39 | 112185 | Bracket, Thermostat..... | 1 |
| 40 | ----- | Sheetmetal Screw, #8 x 3/16"..... | 2 |
| 41 | ----- | Screw, 6-32 x 1/4"..... | 2 |
| 42 | 0309433 | Bracket, Relay..... | 1 |
| 43 | 0509428 | Relay, Door Switch 15A, 120VAC..... | 1 |
| 44 | 0501408 | Screw, 8-32 x 1/4"..... | 2 |
| 45 | 0501538 | Nut, 8-32 Hex Hd..... | 2 |
| 46 | 0508572-1 | Label, Cam Adjust (After W7604)..... | 1 |
| 47 | 111069 | Relay, Rinse Sentry 2PDT, 10A, 240VAC (After W7604)..... | 1 |
| 48 | 0501412 | Screw, 10-32 x 3/8" Truss Hd. SST (After W7604)..... | 2 |
| 49 | 0710583 | Timer Assy. (includes items 11, 12, 28) HT models only (After W7604)..... | 1 |
| 50 | 0308641-1 | Electric Box, Divider RS (After W7604)..... | 1 |
| -- | 0508556 | Harness, Wire (For Timer Assy. 0708538) | |
| -- | 0508557 | Harness, Wire (For Timer Assy. 0708590) | |
| -- | 0510619 | Harness, Wire (For Timer Assy. 0710583) | |

ELECTRICAL SCHEMATICS



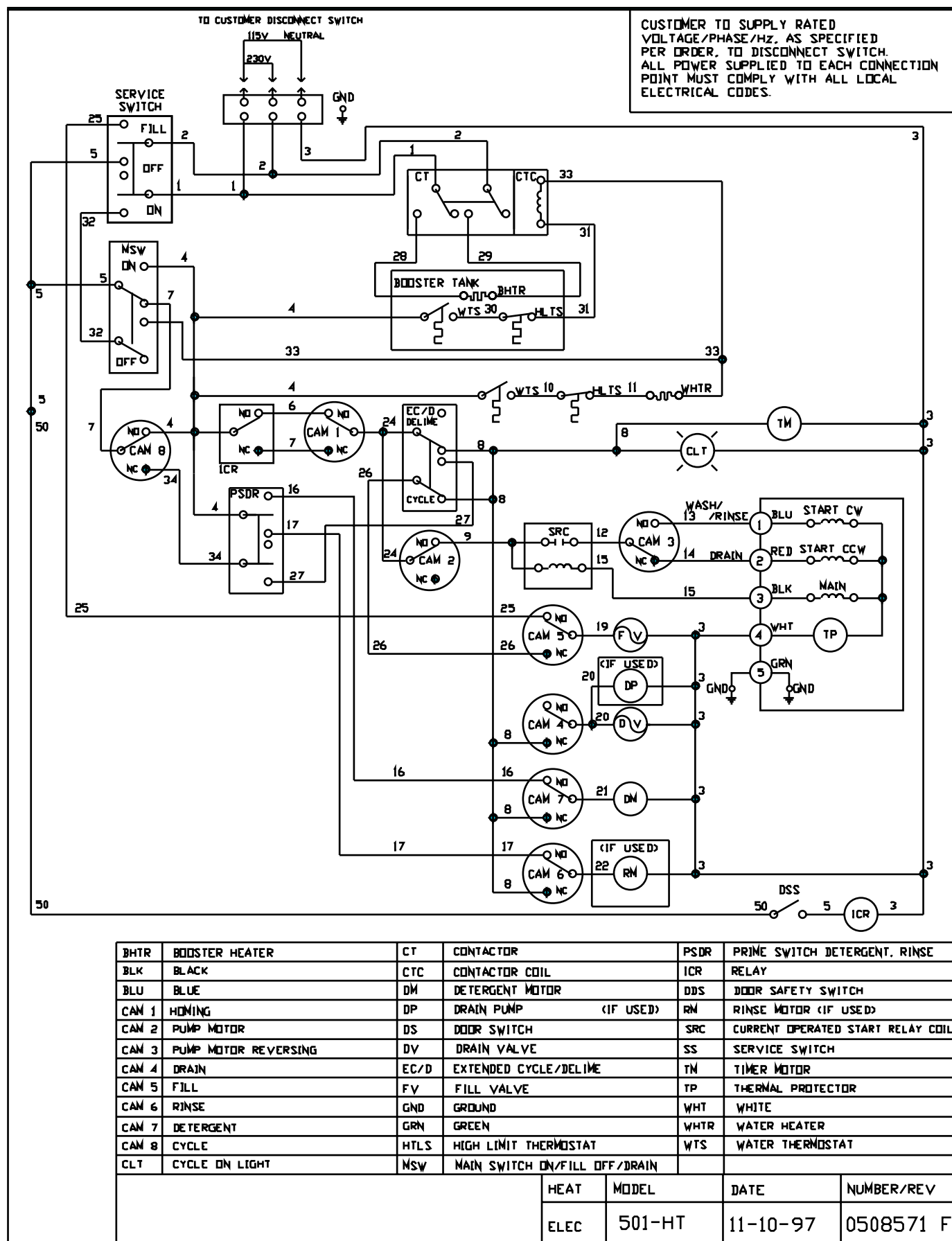
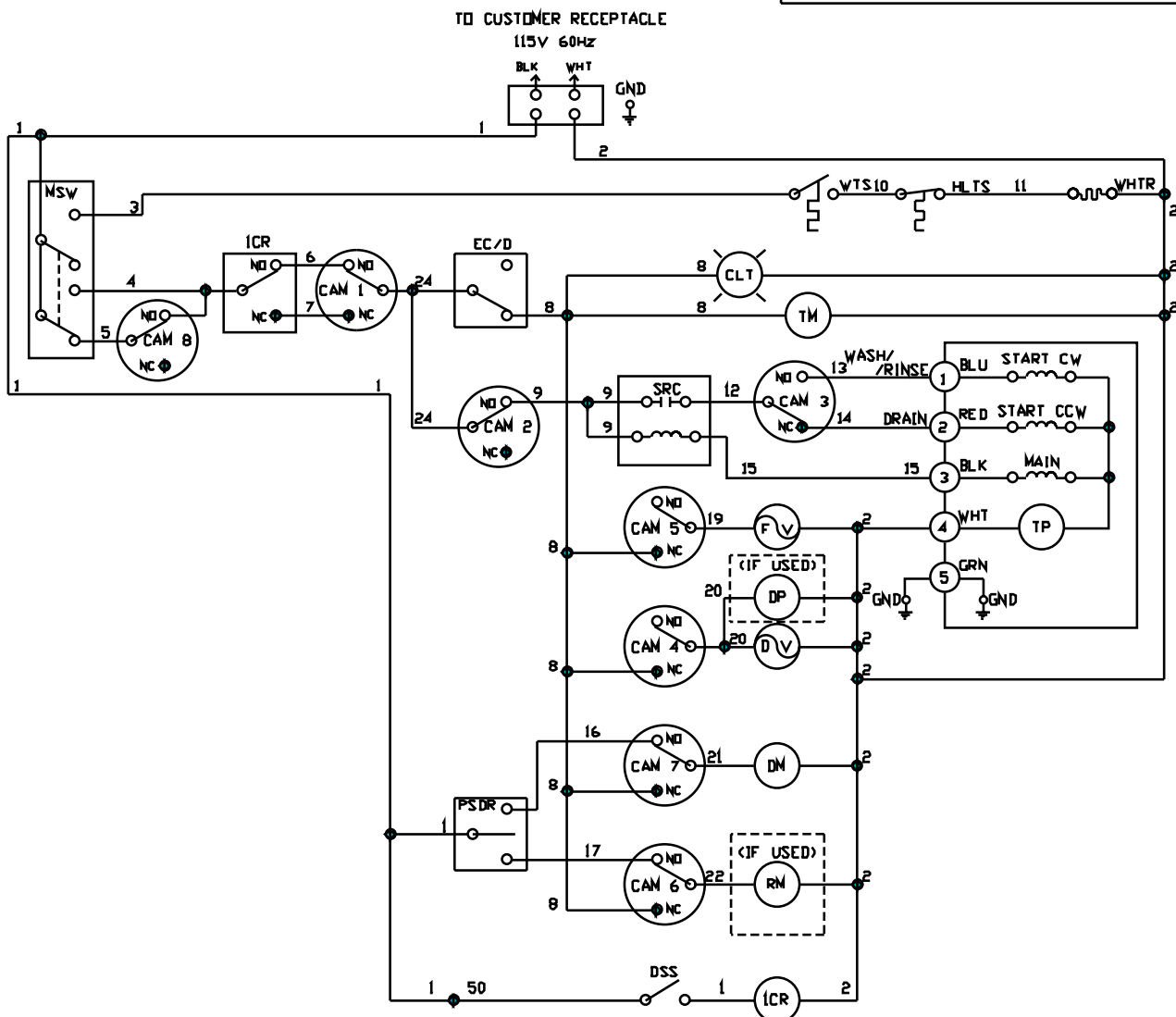


Figure 14 - Electrical Diagram, 501-HT
(For machines Ranging from S/N 6984)

CUSTOMER TO SUPPLY RATED
VOLTAGE/PHASE/HZ, AS SPECIFIED
PER ORDER, TO DISCONNECT SWITCH.
ALL POWER SUPPLIED TO EACH CONNECTION
POINT MUST COMPLY WITH ALL LOCAL
ELECTRICAL CODES.



| | | | | | |
|-------|----------------------|------|-------------------------------|----------|-----------------------------------|
| BLK | BLACK | DM | DETERGENT MOTOR | ICR | RELAY |
| BLU | BLUE | DP | DRAIN PUMP (IF USED) | DSS | REED SWITCH |
| CAM 1 | HOMING | DV | DRAIN VALVE | SRC | CURRENT OPERATED START RELAY COIL |
| CAM 2 | PUMP MOTOR | EC/D | EXTENDED CYCLE/DELINE | TM | TIMER MOTOR |
| CAM 3 | PUMP MOTOR REVERSING | FV | FILL VALVE | TP | THERMAL PROTECTOR |
| CAM 4 | DRAIN | GND | GROUND | WHT | WHITE |
| CAM 5 | FILL | GRN | GREEN | WHTR | WATER HEATER |
| CAM 6 | RINSE | HTLS | HIGH LIMIT THERMOSTAT | WTS | WATER THERMOSTAT |
| CAM 7 | DETERGENT | NSW | MAIN SWITCH ON/FILL OFF/DRAIN | | |
| CAM 8 | CYCLE | PSDR | PRIME SWITCH DETERGENT, RINSE | | |
| CLT | CYCLE ON LIGHT | RM | RINSE MOTOR (IF USED) | | |
| | | HEAT | MODEL | DATE | NUMBER/REV |
| | | ELEC | 501-HTN | 05-23-96 | 0508729 D |

Figure 15 - Electrical Diagram, 501-HTN
(For machines beginning with S/N 6984)

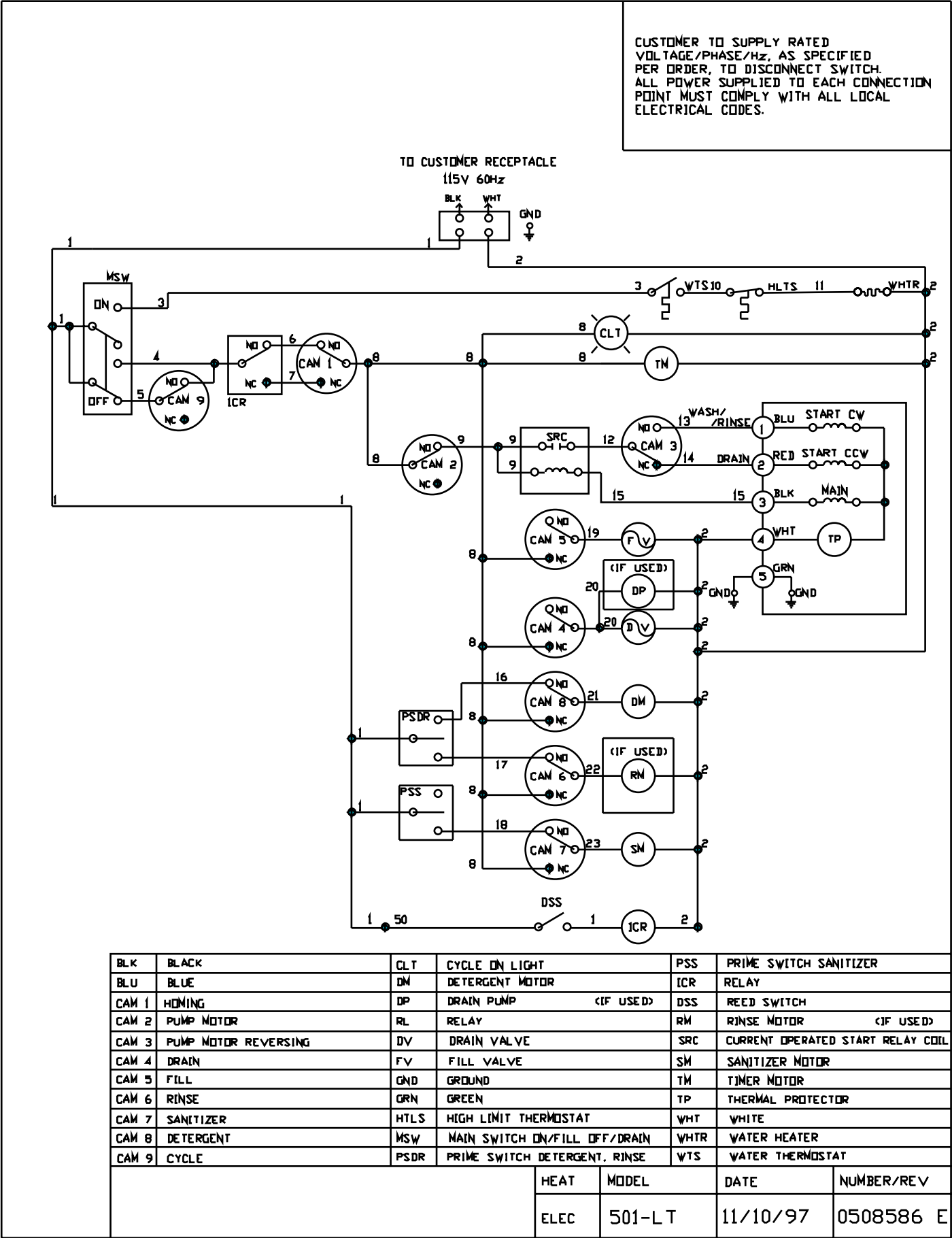
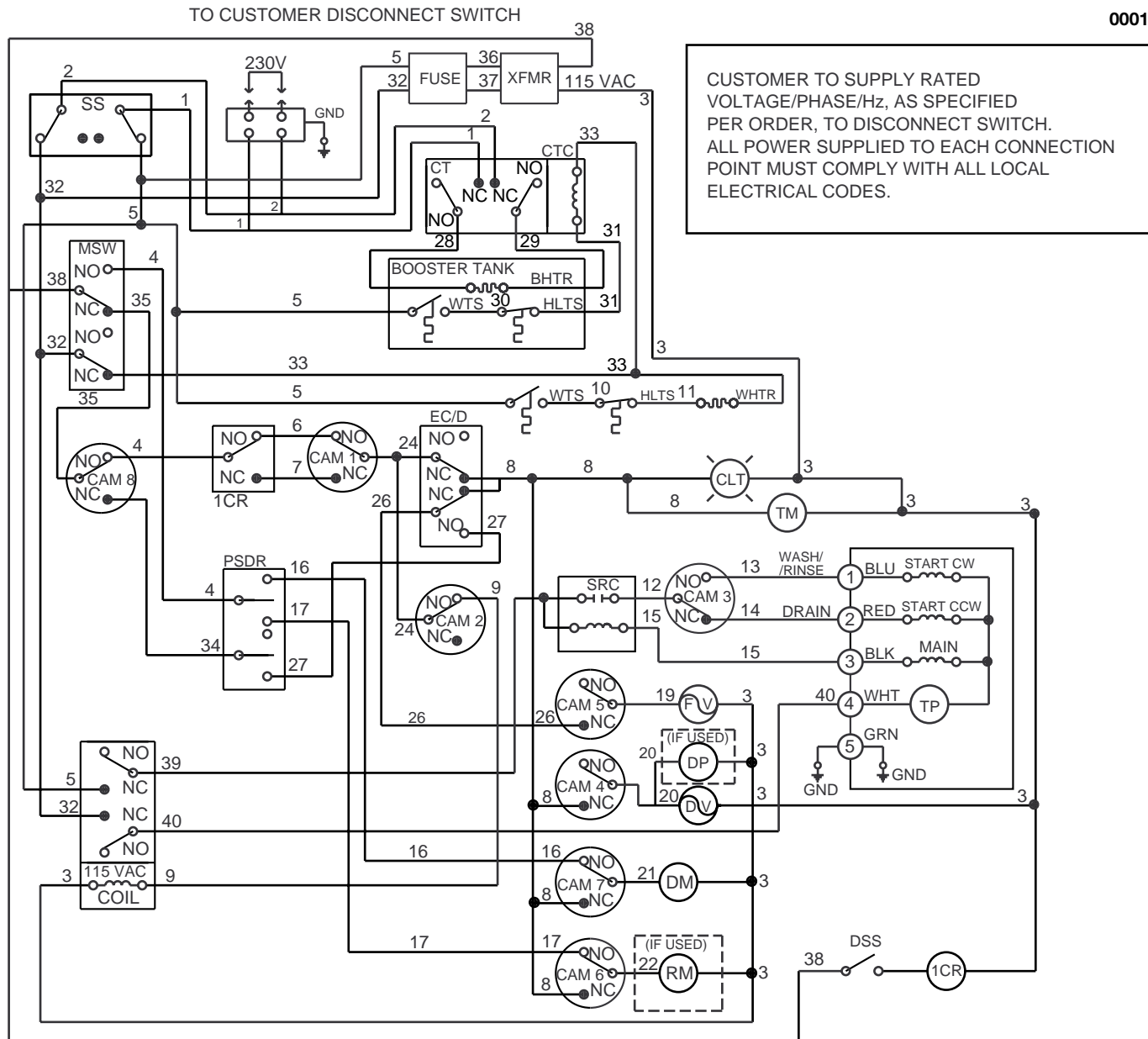


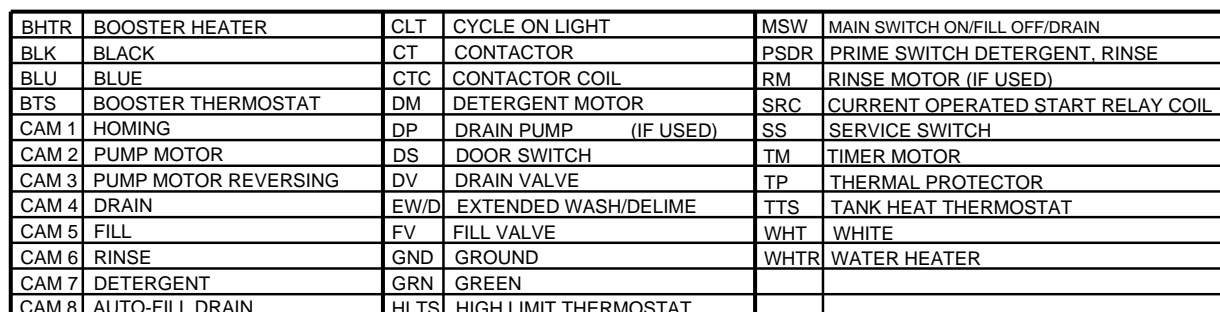
Figure 16 - Electrical Diagram, 501-LT
(For machines beginning with S/N 6984)



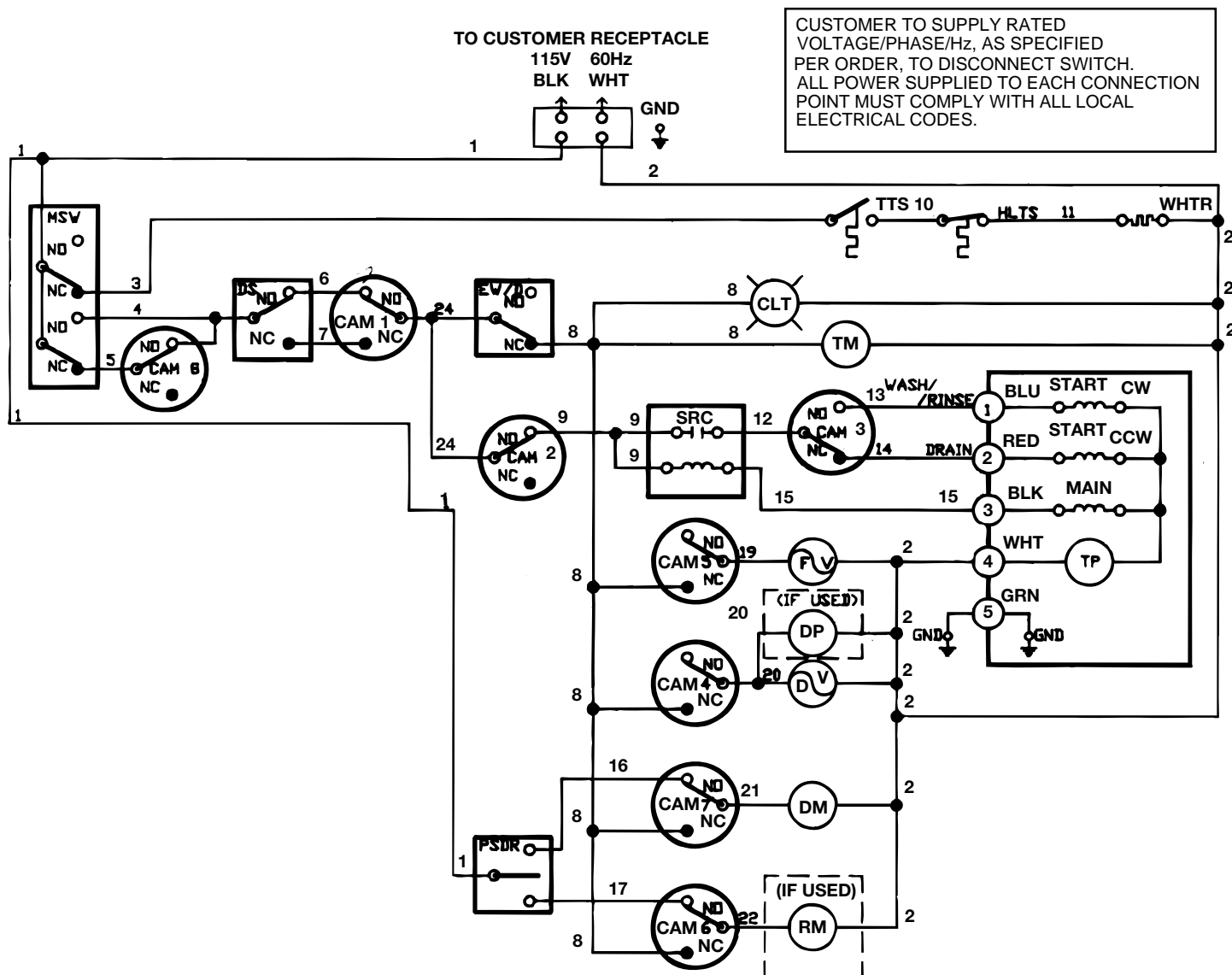
| | | | | | |
|-------|----------------------|------|-------------------------------|------|-----------------------------------|
| BHTR | BOOSTER HEATER | CT | CONTACTOR | PSDR | PRIME SWITCH DETERGENT, RINSE |
| BLK | BLACK | CTC | CONTACTOR COIL | 1CR | RELAY |
| BLU | BLUE | DM | DETERGENT MOTOR | RM | RINSE MOTOR (IF USED) |
| CAM 1 | HOMING | DP | DRAIN PUMP (IF USED) | SRC | CURRENT OPERATED START RELAY COIL |
| CAM 2 | PUMP MOTOR | DSS | DOOR SAFETY SWITCH | SS | SERVICE SWITCH |
| CAM 3 | PUMP MOTOR REVERSING | DV | DRAIN VALVE | TM | TIMER MOTOR |
| CAM 4 | DRAIN | EC/D | EXTENDED CYCLE/DELIME | TP | THERMAL PROTECTOR |
| CAM 5 | FILL | FV | FILL VALVE | WHT | WHITE |
| CAM 6 | RINSE | GND | GROUND | WHTR | WATER HEATER |
| CAM 7 | DETERGENT | GRN | GREEN | WTS | WATER THERMOSTAT |
| CAM 8 | CYCLE | HLTS | HIGH LIMIT THERMOSTAT | | |
| CLT | CYCLE ON LIGHT | MSW | MAIN SWITCH ON/FILL OFF/DRAIN | | |

0508975/A

Figure 17 - Electrical Diagram, 501-HT (50 Hz)

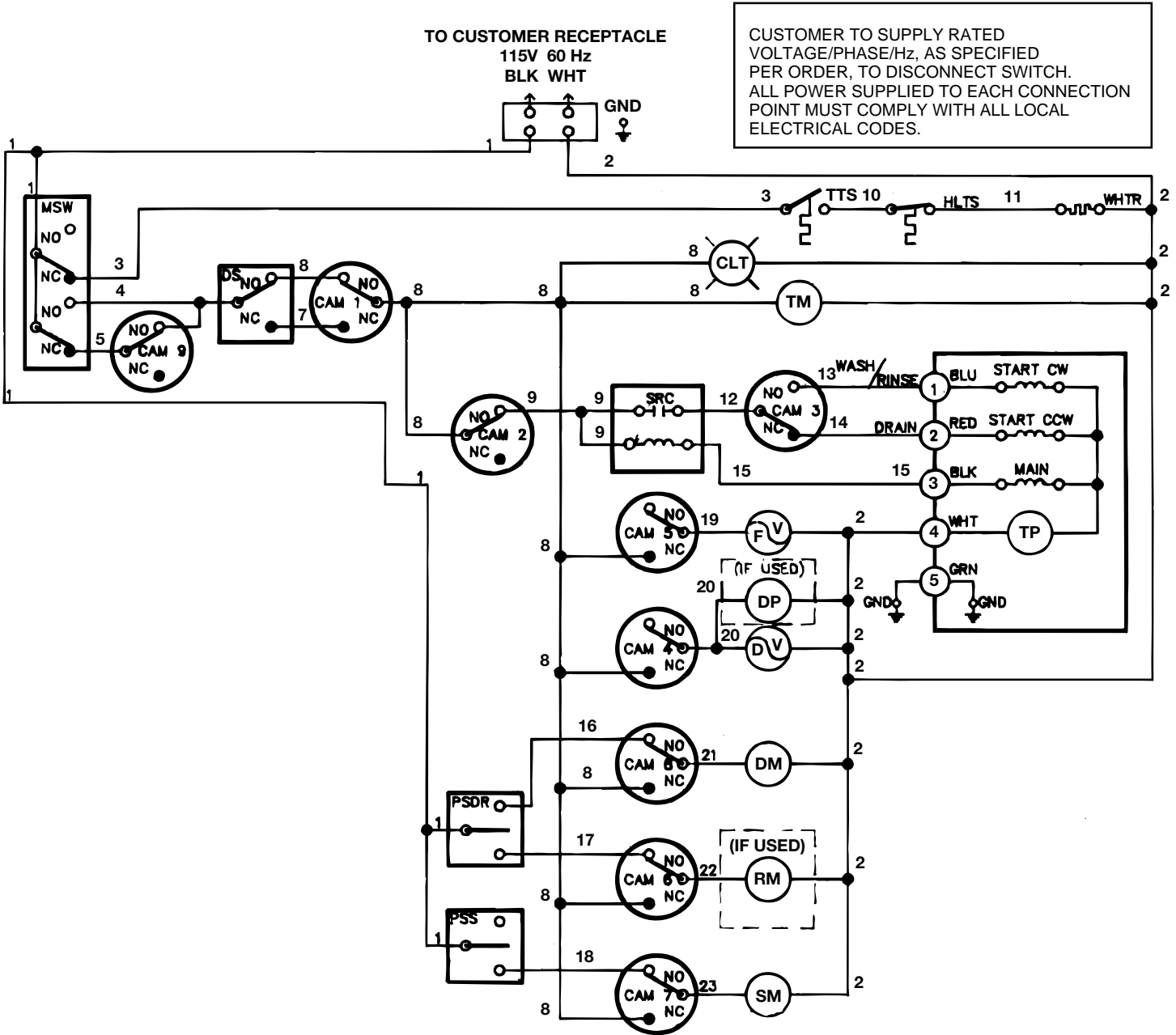


47



| | | | | | |
|-------|----------------------|------|-------------------------------|------|-----------------------------------|
| BLK | BLACK | CLT | CYCLE ON LIGHT | PSDR | PRIME SWITCH DETERGENT, RINSE |
| BLU | BLUE | DM | DETERGENT MOTOR | RM | RINSE MOTOR (IF USED) |
| BTS | BOOSTER THERMOSTAT | DP | DRAIN PUMP (IF USED) | SRC | CURRENT OPERATED START RELAY COIL |
| CAM 1 | HOMING | DS | DOOR SWITCH | TM | TIMER MOTOR |
| CAM 2 | PUMP MOTOR | DV | DRAIN VALVE | TP | THERMAL PROTECTOR |
| CAM 3 | PUMP MOTOR REVERSING | EW/D | EXTENDED WASH/DETIME | TTS | TANK HEATER THERMOSTAT |
| CAM 4 | DRAIN | FV | FILL VALVE | WHT | WHITE |
| CAM 5 | FILL | GND | GROUND | WHTR | WATER HEATER |
| CAM 6 | RINSE | GRN | GREEN | | |
| CAM 7 | DETERGENT | HLTS | HIGH LIMIT THERMOSTAT | | |
| CAM 8 | AUTO-FILL DRAIN | MSW | MAIN SWITCH ON/FILL OFF/DRAIN | | |

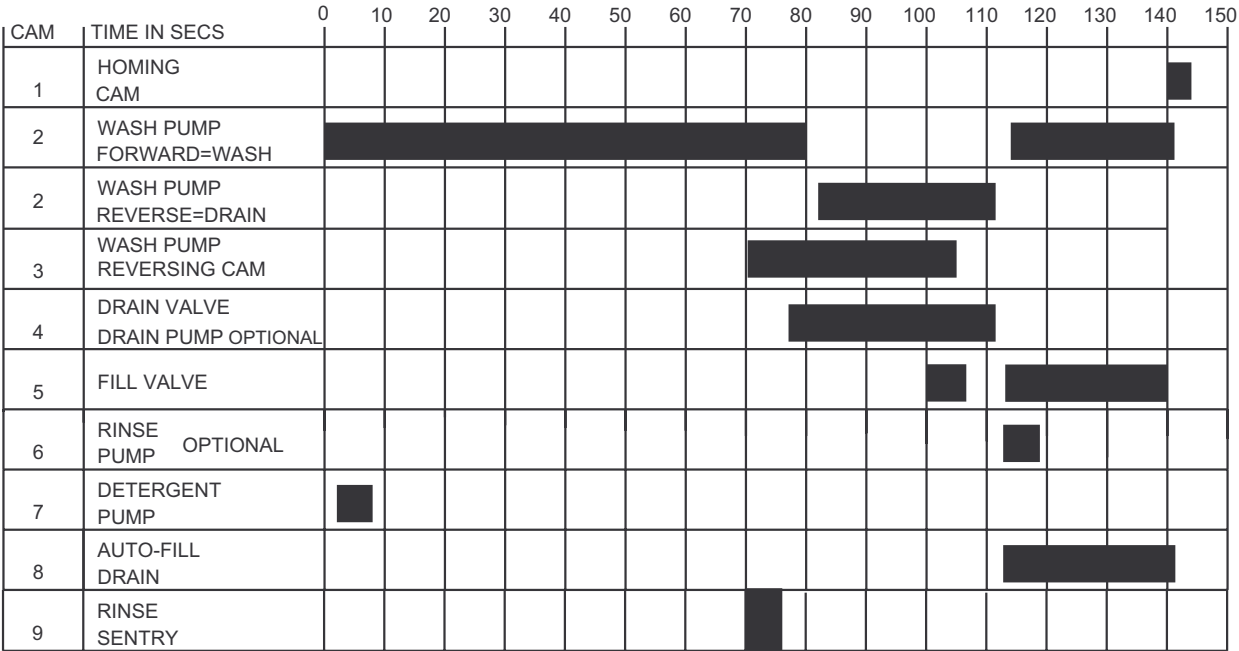
Figure 19 - Electrical Diagram, 501-HTN
(For machines built prior to S/N 6984)



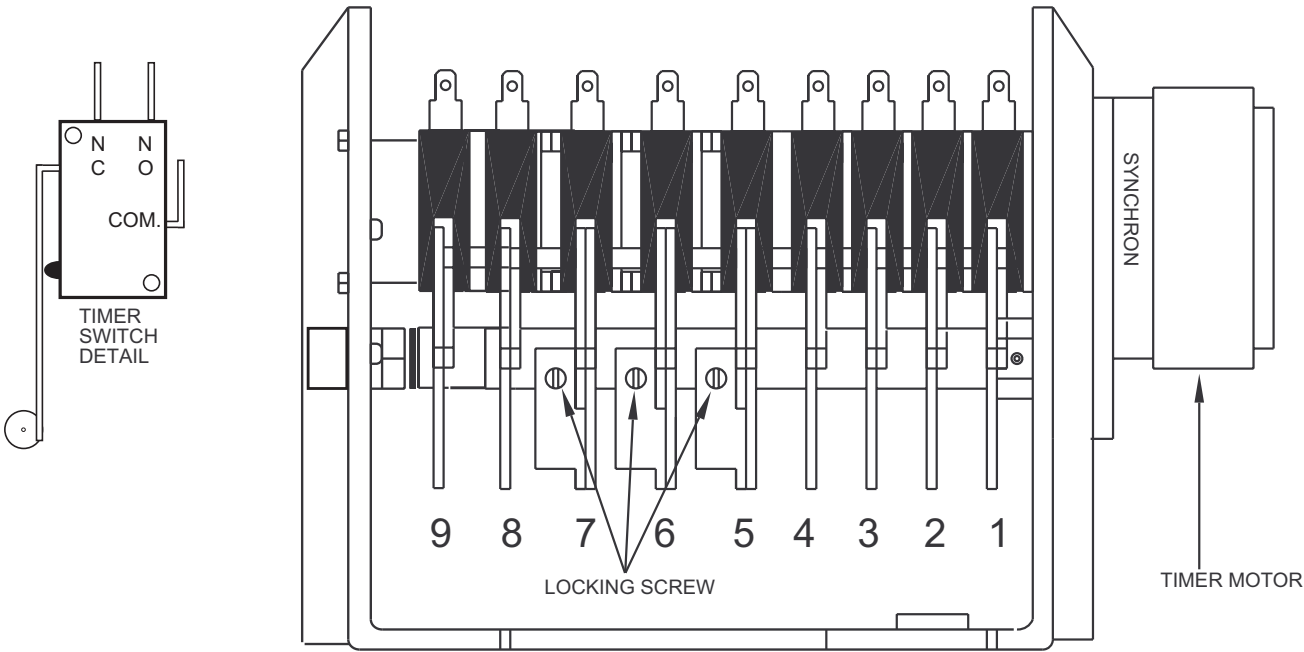
| | | | | | |
|-------|----------------------|-------|-------------------------------|------|-----------------------------------|
| BLK | BLACK | CAM 9 | AUTO-FILL DRAIN | PSDR | PRIME SWITCH DETERGENT, RINSE |
| BLU | BLUE | CLT | CYCLE ON LIGHT | PSS | PRIME SWITCH SANITIZER |
| BTS | BOOSTER THERMOSTAT | DM | DETERGENT MOTOR | ICR | RELAY |
| CAM 1 | HOMING | DP | DRAIN PUMP (IF USED) | RM | RINSE MOTOR (IF USED) |
| CAM 2 | PUMP MOTOR | DS | DOOR SWITCH | SRC | CURRENT OPERATED START RELAY COIL |
| CAM 3 | PUMP MOTOR REVERSING | DV | DRAIN VALVE | SM | SANITIZER MOTOR |
| CAM 4 | DRAIN | FV | FILL VALVE | TM | TIMER MOTOR |
| CAM 5 | FILL | GND | GROUND | TP | THERMAL PROTECTOR |
| CAM 6 | RINSE | GRN | GREEN | TTS | TANK HEAT THERMOSTAT |
| CAM 7 | SANITIZER | HLTS | HIGH LIMIT THERMOSTAT | WHT | WHITE |
| CAM 8 | DETERGENT | MSW | MAIN SWITCH ON/FILL OFF/DRAIN | WHTR | WATER HEATER |

Figure 20 - Electrical Diagram, 501-LT/UTL
(For machines built prior to S/N 6984)

TIMING CHART 501HT



If booster thermostat is calling for heat, cam 9 will pause wash cycle until it reaches 82°C/180°F.

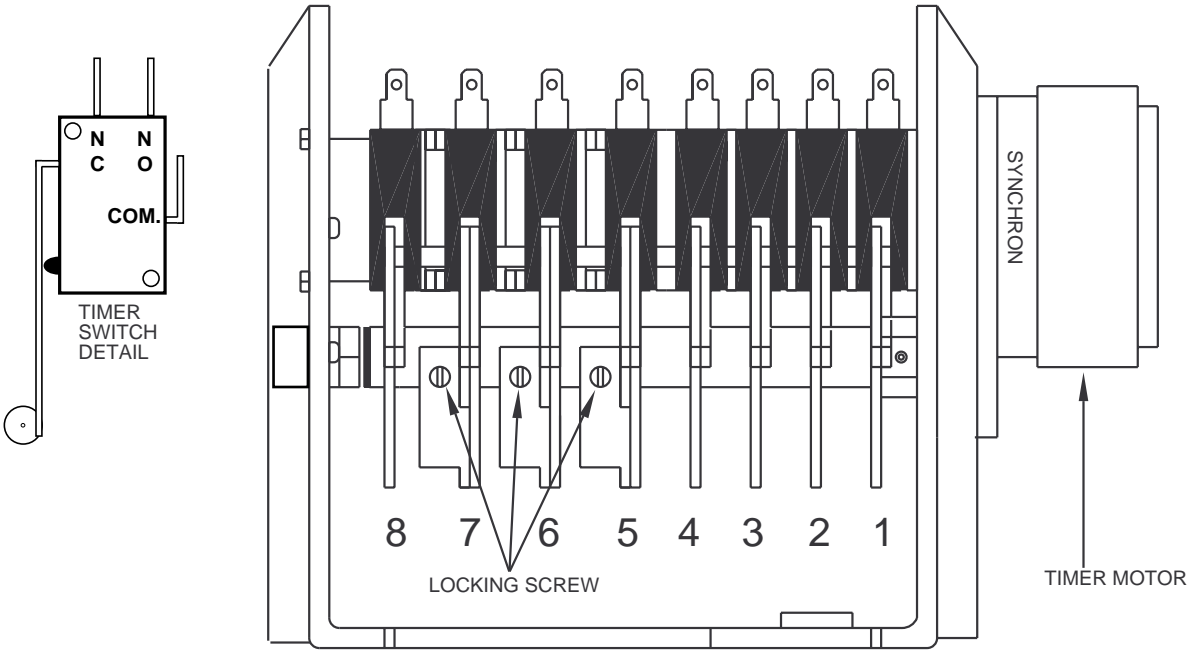
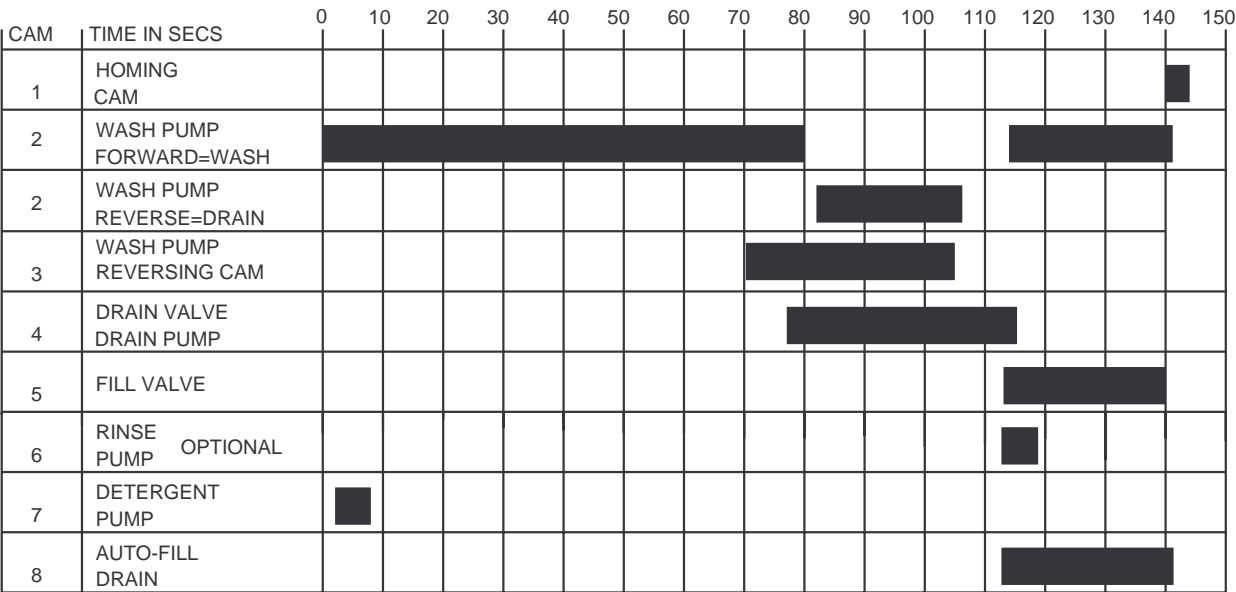


TIMER ASSEMBLY 501HT

Figure 21 - Timer Chart and Diagram, 501-HT
(For machine beginning with S/N W7604)

TIMING CHART 501HT

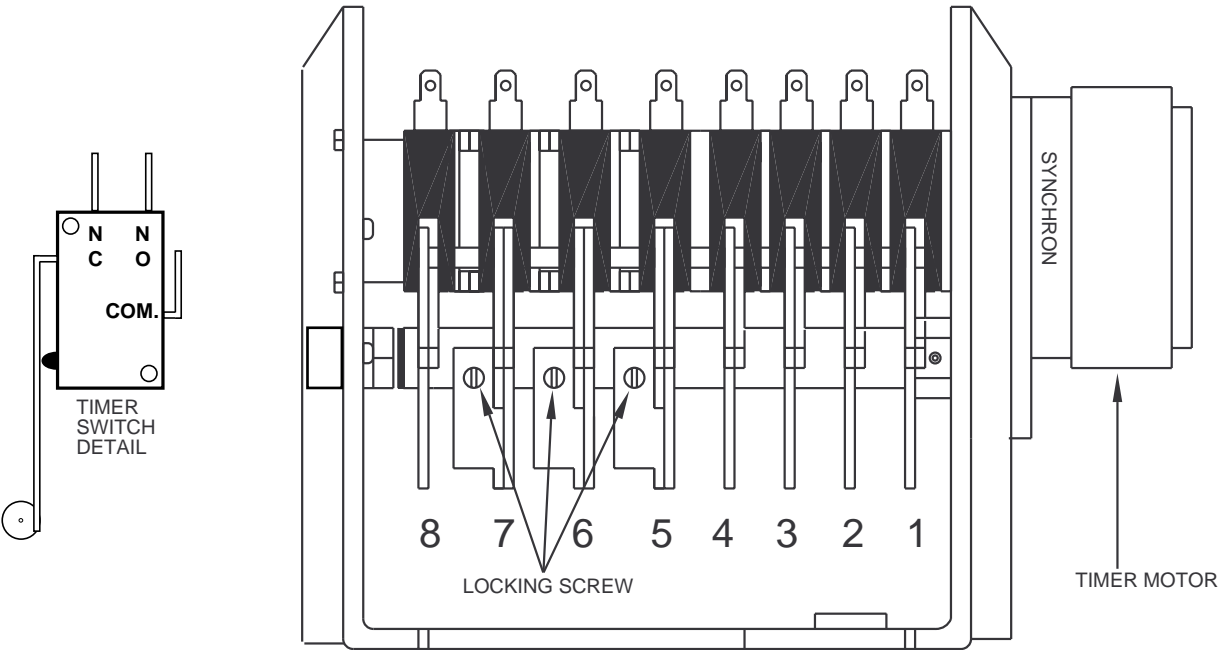
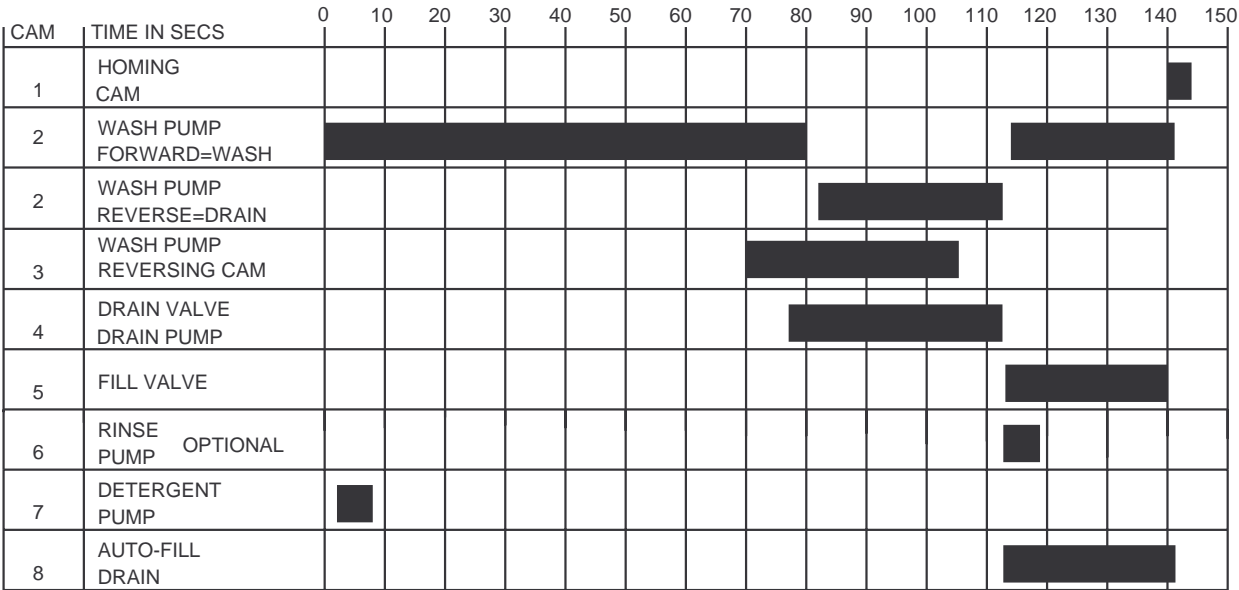
00014



TIMER ASSEMBLY 501HT

Figure 22 - Timer Chart and Diagram, 501-HT
(Prior to S/N W7603)

TIMING CHART 501UT

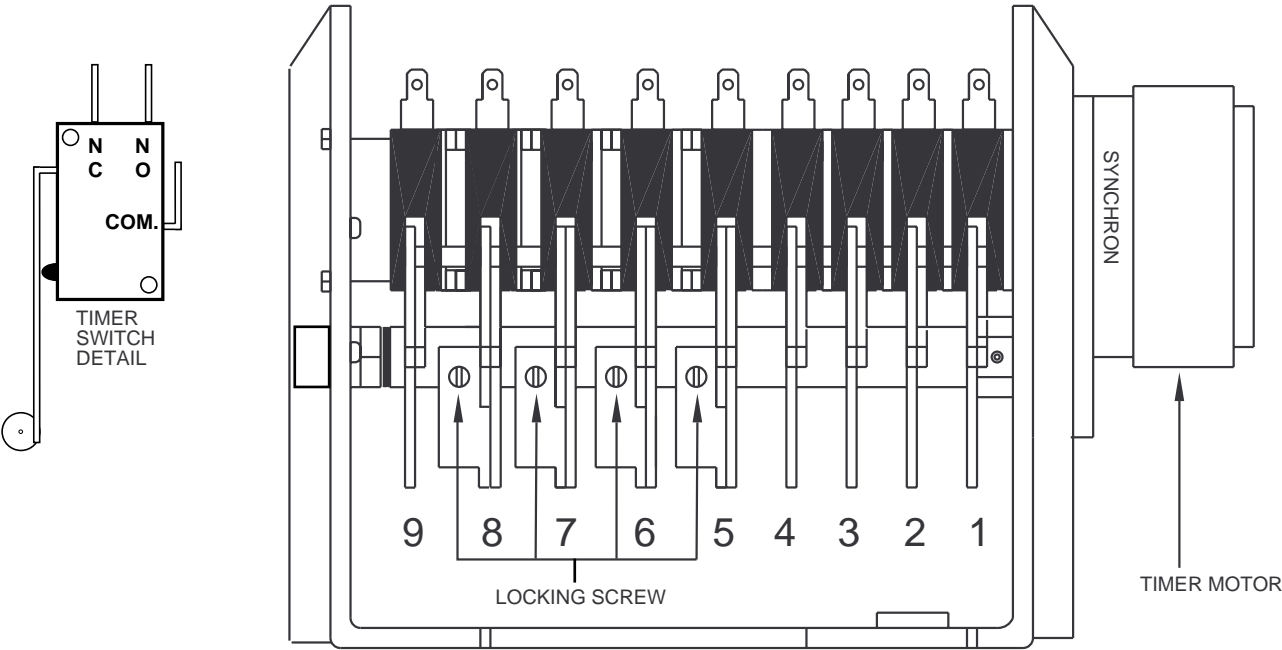
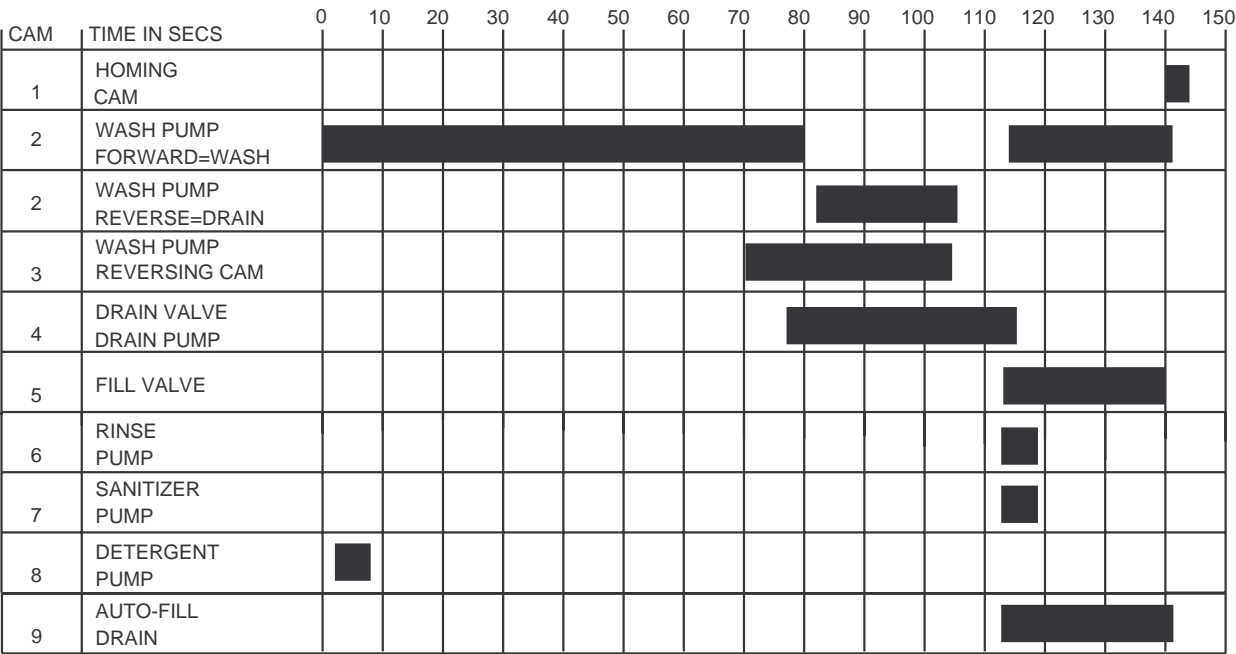


TIMER ASSEMBLY 501UT

Figure 23 - Timer Chart and Diagram, 501-UT

TIMING CHART 501LT

00016



TIMER ASSEMBLY 501LT

Figure 24 - Timer Chart and Diagram, 501-LT

