

PURELL® ES8 Dispensing System Maintenance Guide

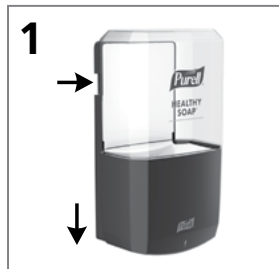


Built on over 70 years of dispensing innovation, new PURELL ES® hand hygiene systems are as durable and reliable as they are beautiful. With PURELL® products, it's easy for patients, visitors and staff to see how much you care about cleanliness, health and well-being.

- Energy-on-the-refill Technology: touch-free and always ready
- AT-A-GLANCE™ refill design makes it easy to see when refills need to be changed
- Each new refill refreshes the look of the dispenser
- Distinct PURELL brand design: engineered to fit everywhere
- Refills are recyclable
- SANITARY SEALED™ refills help reduce potential for contamination
- LOCK OR NOT™ Technology: can convert to locking system
- Fully ADA compliant



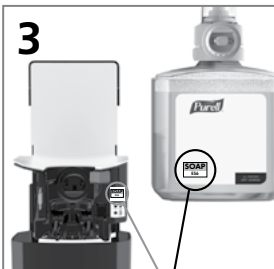
Refill Replenishment



Open dispenser by pressing release buttons on the sides & slide the front cover down.

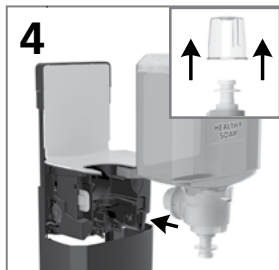


Push the **green** release button and remove empty refill.

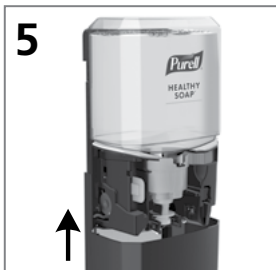


Match label on refill with label on dispenser.

SOAP ES8 **SAN** ES8



Remove the refill cap and push the new refill into dispenser until it clicks in place.



Close the dispenser cover. The green status light will blink after closing, indicating the dispenser is ready to use.



Place palm approximately 2" below dispenser, product will dispense within 1 second of sensor activation.

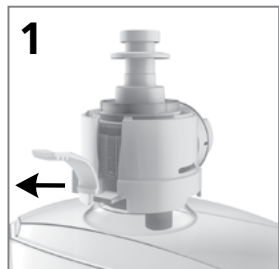
Dispenser Indicator Light Reference

- Blinking GREEN Light: Dispenser ready
- Blinking RED Light: Refill issue (no refill, wrong refill, non-functioning refill)
- Solid RED Light: Issue with dispenser or refill energy. Contact GOJO Customer Service for assistance.

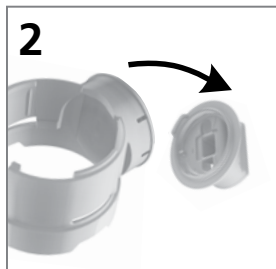
Care & Cleaning Instructions

- 1 Always remove the refill before cleaning to avoid accidental actuation.
- 2 Routinely wipe dispensers with a soft, moist cloth.
- 3 Pay special attention to cleaning under the dispenser or push bar, as product may build up in this area.
- 4 Do not use abrasive cleaners or chemical solvents* to clean. Use of hospital-approved disinfectant and other typical cleaning solutions is acceptable.

Refill Disposal/Recycling



Pull the tab to release the collar from bottle.



Separate the energy source (non-rechargeable lithium metal coin cell battery) from the collar by snapping down. Dispose or recycle in accordance with federal, state and local regulations.

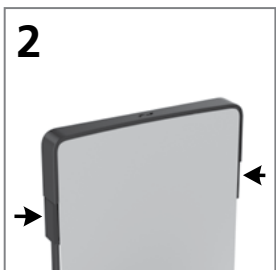


Unscrew the pump from the bottle and discard. Dispose/recycle the PET bottle and collar.

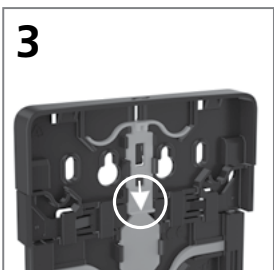
Locking the Dispenser with LOCK OR NOT™ Technology



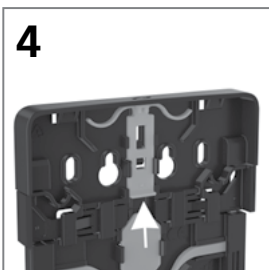
Lock the dispenser by aligning the key with the keyhole on the top of the dispenser and pushing down until a click is heard. Note: Once locked, dispenser will always require key to open, until LOCK-OR-NOT "auto-lock" functionality is manually turned off.



Check for a successful lock by pressing the release buttons on the sides of the dispenser to see if the front cover releases and slides down. Note: Once locked, the dispenser will remain in the locked state. To open a locked dispenser, insert the key into the keyhole and press down until the front cover is released.



To manually remove the "auto-lock" function, unlock dispenser using key, remove refill, and take off white back plate of dispenser.



To manually unlock, push the locking mechanism toward the top of the dispenser. Note: This will leave the dispenser in an unlocked state until key is inserted to re-lock the system.

* Abrasive cleaners will scratch the plastic and labeling. Strong chemical solvents can dull the plastic.

PURELL ES® Dispensing Systems available for soap and sanitizer.

HCE-LIT-ES8MAINT
26684 (9/2019)



GOJO Industries, Inc.
One GOJO Plaza, Suite 500
P.O. Box 991 • Akron, OH 44309-0991 • USA
Tel: 1-330-255-6000 • Toll-free: 1-800-321-9647
Fax: 1-800-FAX-GOJO

©2019. GOJO Industries, Inc. All rights reserved.

For questions, please reach out to
Customer Service at 1-800-321-9647

To learn more, visit
Canada: www.PURELLSOLUTION.ca
Global: www.GOJOInternational.com

