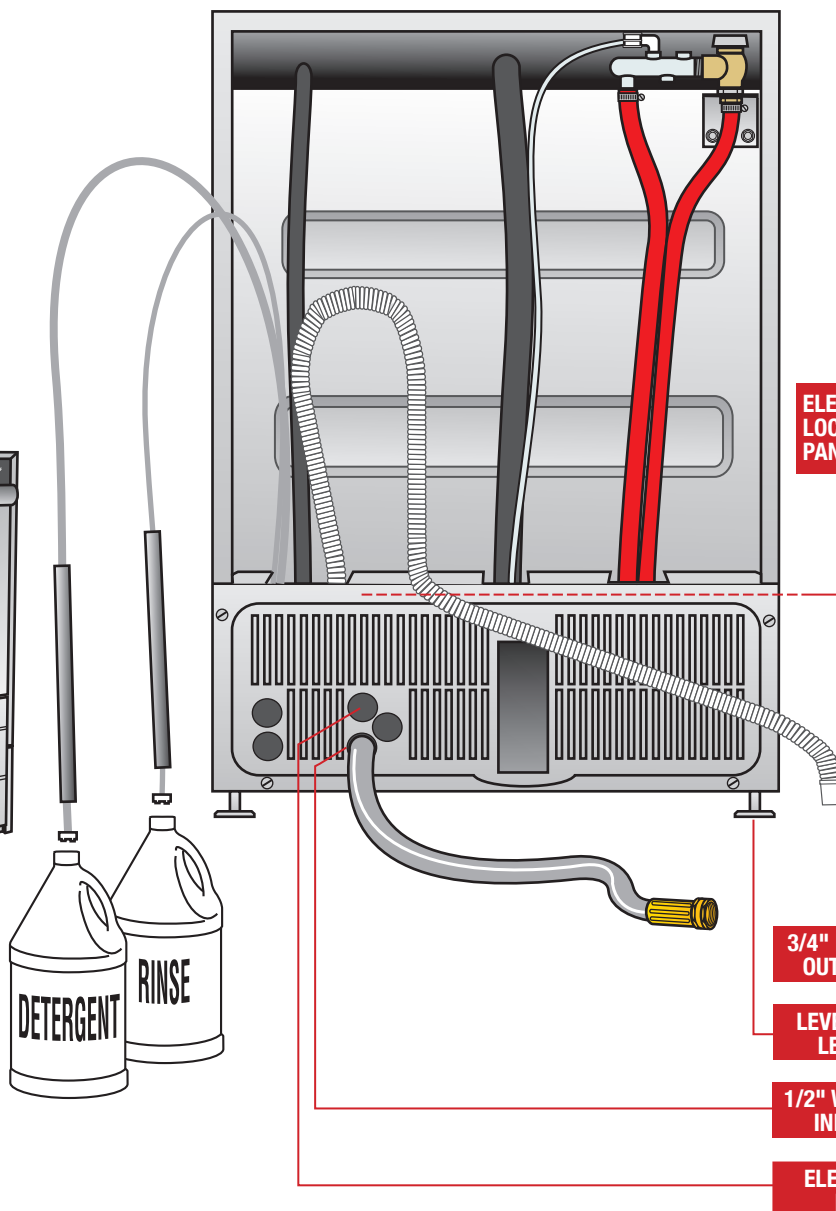


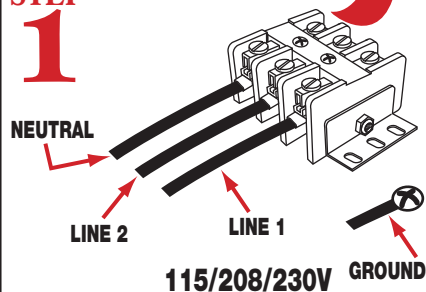
UC65e

Quick Setup Instructions

WARNING: Electrical and plumbing connections need to be made by a qualified service person who will comply with all available Federal, State and Local Health, Electrical, Plumbing and Safety codes.

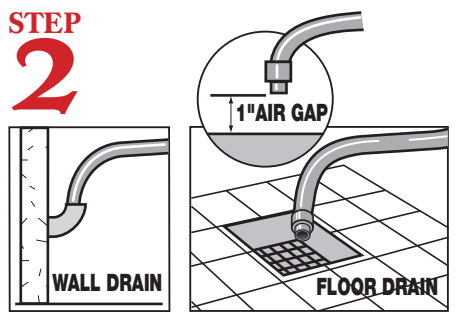


STEP 1



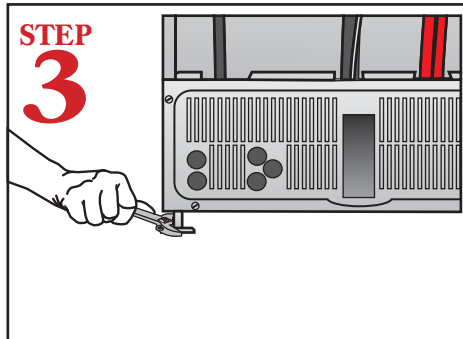
Connect lines 1 and 2 to electrical block located inside front panel.

STEP 2



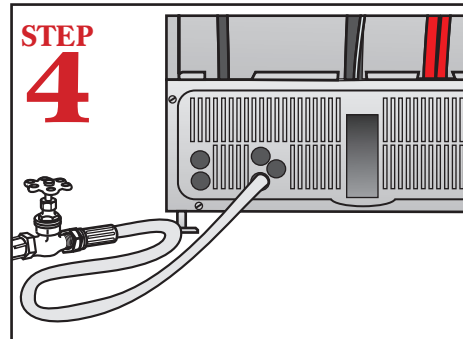
Connect the drain hose to wall or floor drain. The floor drain must have a 1 inch air gap between drain hose and floor drain.

STEP 3



Level dishmachine by adjusting leveling legs. Dishmachine must be level front and back to ensure proper performance.

STEP 4



Connect dishmachine to hot water source, minimum temperature 120F, better results at 140F.

UC65e

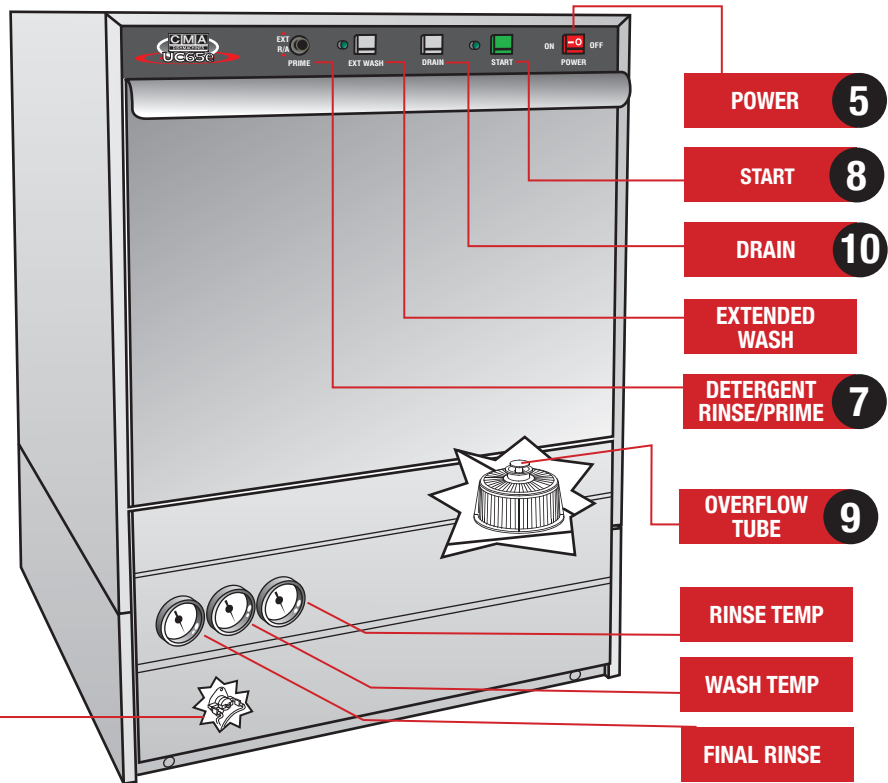
Quick Setup Instructions

WARNING: Electrical and plumbing connections need to be made by a qualified service person who will comply with all available Federal, State and Local Health, Electrical, Plumbing and Safety codes.

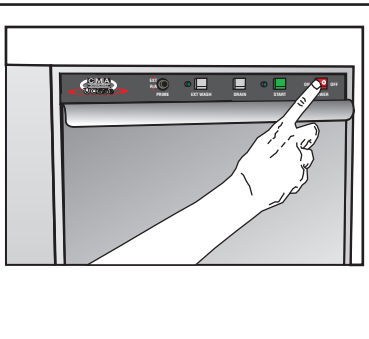
NOTE: To prevent Heating Element damage, the UC65e heater must be filled with water before the heating element is energized. For this reason the High Limit Switch has intentionally been disconnected at the factory and will require re-connection.

6

UC65e FRONT VIEW

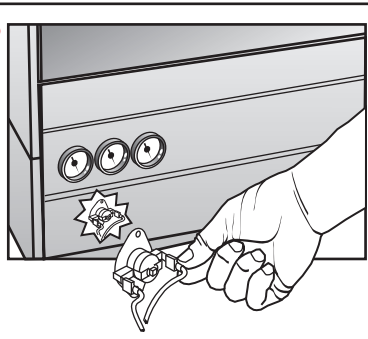


STEP 5



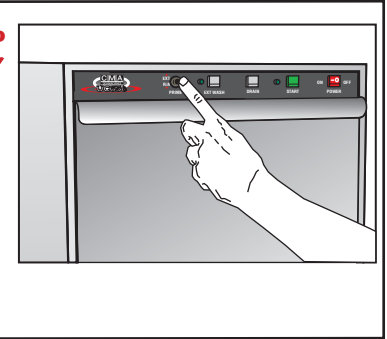
Push the power button to turn on the dishmachine. Wash tank will fill automatically.

STEP 6



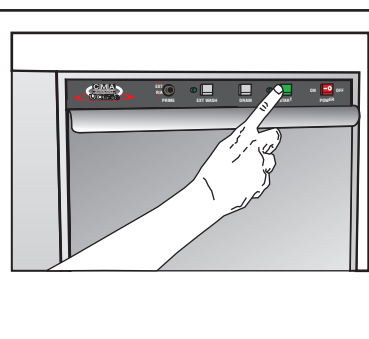
After filling dishwasher for the first time, (**CAUTION: turn power supply off**) reconnect the factory unplugged wire to booster high-limit switch located behind front panel.

STEP 7



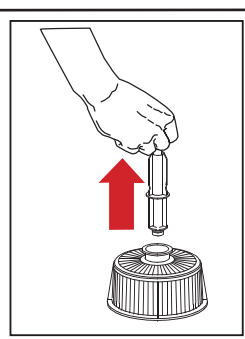
The chemical pumps must be primed (using the prime switch) before the dishmachine is operated.

STEP 8



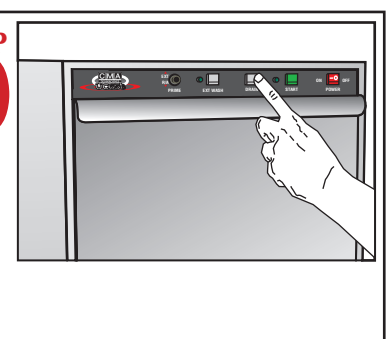
Push the "START" button to activate the dishmachine.

STEP 9



Push the power button (STEP 5) to turn power off. When draining the dishmachine, remove overflow tube located inside the wash tank.

STEP 10



With the overflow tube removed, push drain button to empty dishmachine. Reinstall overflow tube when drain cycle is complete.