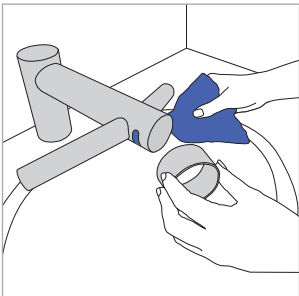


Cleaning guide

To always get the best performance from the Dyson Airblade Wash+Dry hand dryer, it's important to regularly clean it and check for blockages.

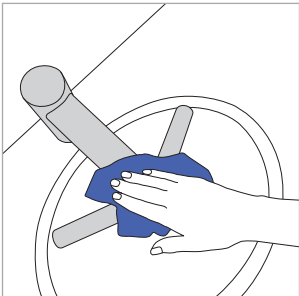
Clean the sensors

Wipe sensors using a soft cloth and non-abrasive cleaner then place cleaning cap over sensors to prevent activation.



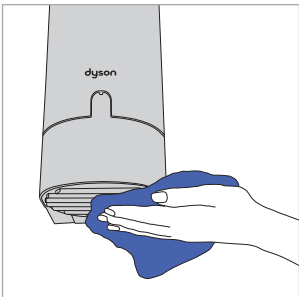
Clean the machine

Clean all tap surfaces, sink, mirror and any walls or counter tops. When complete REMEMBER to remove cleaning cap.



Clean and check for blockages

REGULARLY clean air inlets on base of motor bucket (under sink). Ensure plughole in sink is free from blockages so water can drain freely.



What to use to clean the Dyson Airblade Wash+Dry hand dryer

Important: Do not pressure wash the Dyson Airblade Wash+Dry hand dryer.

Types of cleaning	How to clean	Do not use
Routine cleaning of light soiling and fingerprints.	A mild detergent applied with a lint-free cloth. Remove detergent residue with a damp cloth and tap water.	Solvent/oil-based mixes
Stubborn marks and stains, oil and grease marks.	A mild detergent, alcohol or Quaternary ammonium solution, diluted to the manufacturer's guidelines. Remove detergent residue with a damp cloth.	Alkali-bleach mixes
Water marks.	Water marks can be avoided by drying with a dry lint-free cloth.	Foaming ingredients
		Bleach or abrasive cleaners

For further information about Water supply cleanliness and bacteria growth, please refer to the Owner's manual.

Servicing and support

For more information:
866-236-3884
commercial.sales@dyson.com
www.dysoncanada.ca