

HOW TO CLEAN WITH OMNICLEAN



OmniClean  
RESTROOM KIT



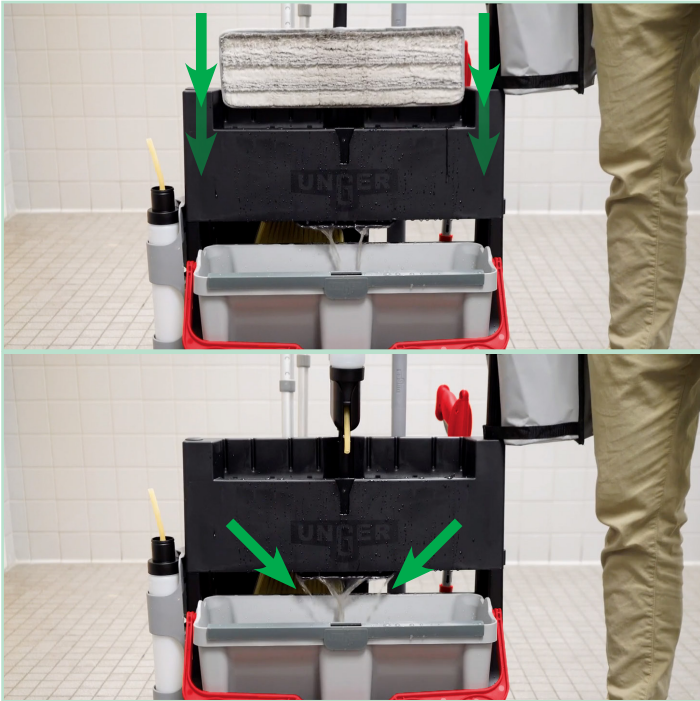
Quality Tools for Smart Cleaning™

Step 5



When mop pad is dirty, insert into scrub board bucket and scrub debris off pad

Step 6



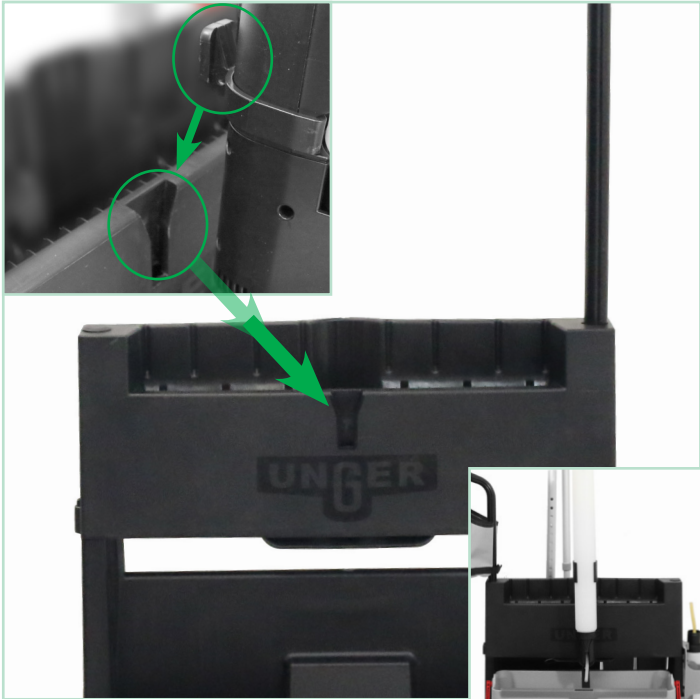
Insert mop into wringer, wring mop 2x making sure to completely pull mop out of wringer each time

Step 7



Use restroom accessories as needed

Step 8



When mopping is complete, empty rinse bucket into utility sink and hang Excella into storage clip



Unger OmniClean Restroom Kit

PART NO.: CLRRK CASE QTY: 1

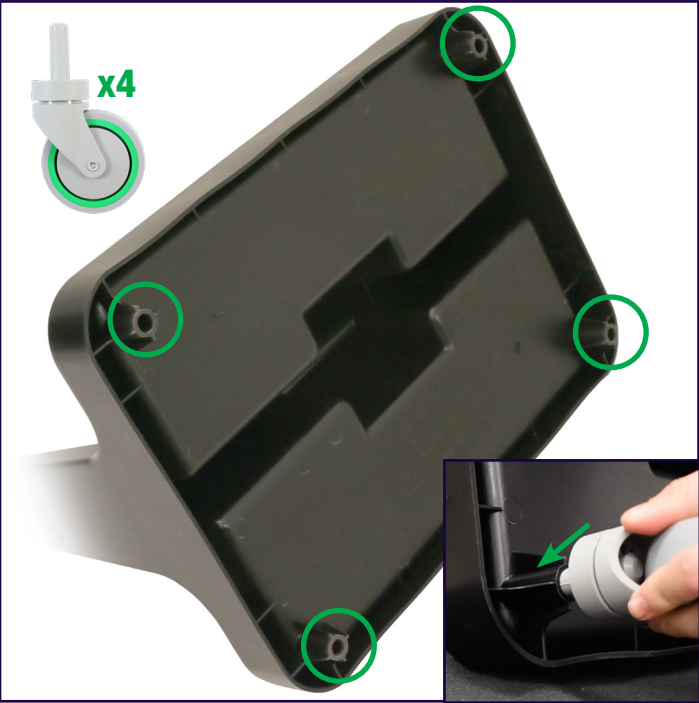
- EFPL1 Offset Pole with Actuator
- EFBTS Small Bottle 0.5L
- EFBTL Large Bottle 1L
- CLMPH Pad Holder
- CLMFP Microfiber Pad (2)
- EDTBR DustPan Telescopic red
- BBCOR Toilet Brush Handle w/2 brush heads
- NN40R NiftyNabber Red 18"
- SCCS0 SmartColor Rectangular Labels (2)
- 21483 Carriage with Wringer
- 21375 Gray Bucket
- 21533 Gray Scrub Board
- 21484 Offset Tube Carriage Handle
- 21527 Red Bucket Handle
- 21457 Dual Bottle Holder Clip
- 21458 DustPan Holder Clip
- 21463 Toilet Brush Holder Clip
- 17997 Nifty Nabber Holder Clip
- 21462 Storage Caddy
- 21805 Excella Clip
- 17891 Casters (4)



ASSEMBLY

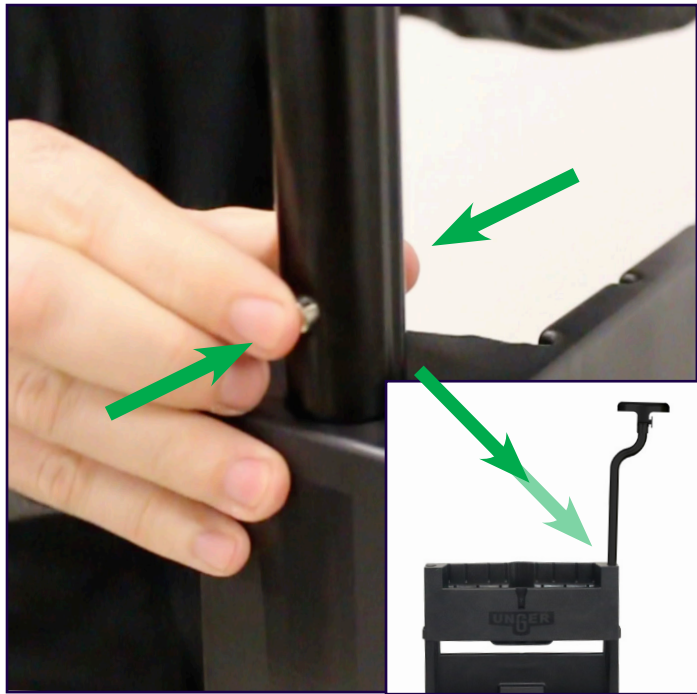


Caster Installation



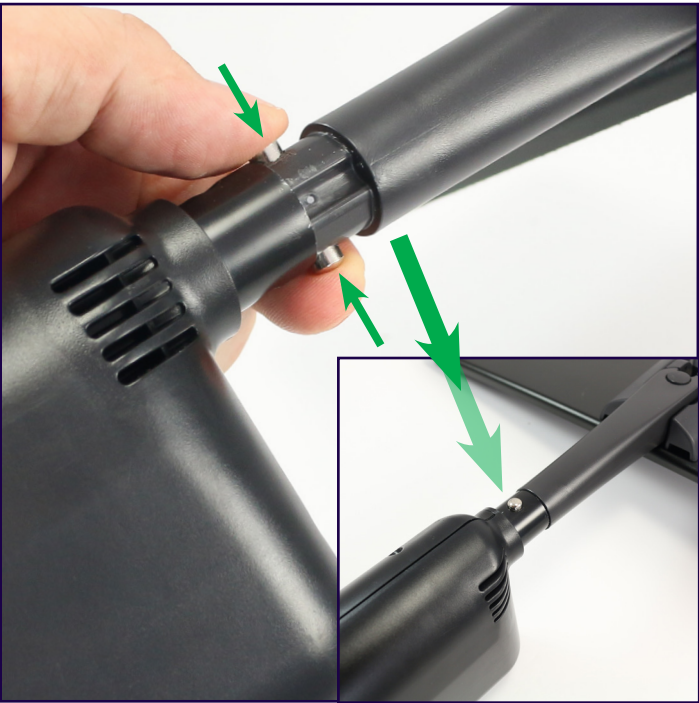
Push casters firmly into the base of the carriage

Handle Installation



On the handle, press metal pins and guide into the carriage base until you hear a click

Mop Head Installation



Press metal pins on mop pad holder into the base of the Excella pole until you hear a click

Accessory Installation



Attach accessory clips and store tools; place dustpan as pictured

HOW TO CLEAN WITH OMNICLEAN



Step 1



Fill scrub board bucket with water to the fill line and place bucket on carriage  
*(Scrub board bucket is always on Unger logo side)*

Step 2



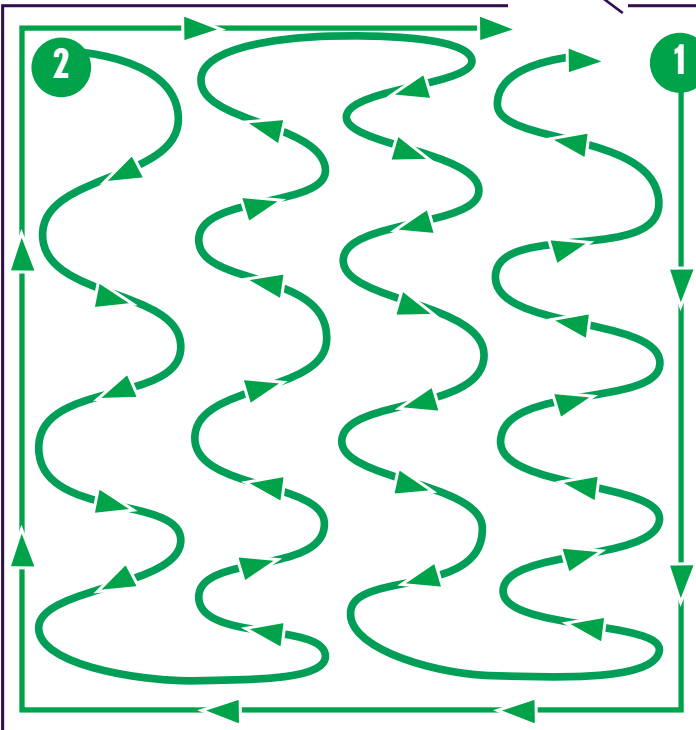
Adjust the height of Excella pole to chin height; tighten the locking collar

Step 3



Dispense cleaning agent

Step 4



Mop with "S" motion